



Bra-makers Supply

**Professional quality supplies
for intimate apparel**

2009

1104 Fennell Avenue East, Unit 219
Hamilton, Ontario, Canada
L8T 1R9

Phone: 905-538-1396 Fax: 905-538-1397

*www.bramakers.com
www.bramakerssupply.com*

Greetings to all our bra-making friends!

We love making bras! We love the colours, the fabrics and the trims. Best of all, we love the way the bras we make fit. You can love bras as much as we do, by sewing your own and sewing for those you care about. But almost everyone asks us...how did we get into this?

It all started 11 years ago in response to students who could not get the supplies Beverly was using in her bra-making classes. There wasn't anywhere to buy the supplies, the fabrics and if you could find a few elastics, they weren't the professional quality we were used to seeing in ready-to-wear. There also wasn't anywhere to get professional instruction in this fascinating field. Beverly had one of her famous "brilliant" ideas and really, how hard could it be? She soon learned how difficult it was! Sourcing has been and continues to be a huge challenge, especially since a lot of domestic mills have closed. Nonetheless, 11 titillating years later, Bra-makers has its own warehouse and our wonderful classroom on-site where we teach students from all over the world - the elements of bra design, draft, fit and construction.

So many of those we have taught over the years have used the lessons we've taught and have started sewing for their daughters, granddaughters and nieces. Others are sewing for their mothers and sisters or other family members with special needs.

Many of you have turned your love of sewing into a made-to-measure bra business. Isn't it great to be working and still doing something you love? The made-to-measure bra-maker is so much in demand all over the world - it's become a career choice for those who want a second career or one to round out their current sewing business. We've got students who are now doing swimwear, some who are doing showgirl and dance costumes and some who have specialized in corsets.

Our staff has grown, with Amanda joining us in 2007. She will happily take phone orders or answer questions you may have about certain products we carry. Amanda works alongside Linda, who is both our Customer Service Manager and our instructor for many of the bra classes, including our VERY popular Boot Camps.

We hope you enjoy our wholesale catalogue of bra supplies - it's our biggest one yet with lots of new things to celebrate the joy of bra-making. We sincerely hope you find it informative and helpful.

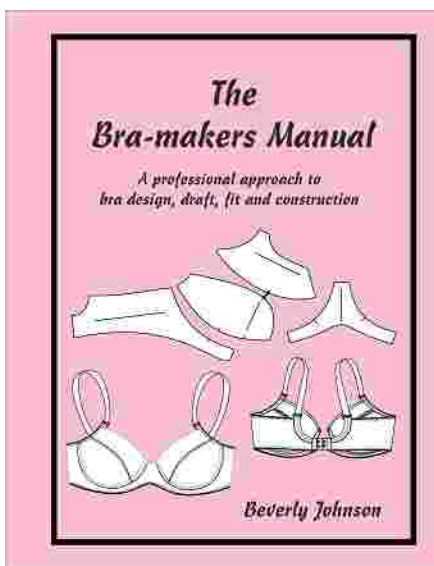
Beverly, Linda and Amanda

Where to find it:

BOOKS & DVDs	1
GET ME STARTED KITS & BUNDLES	2
PATTERNS	3-10
FABRICS	11-14
LACE FABRICS	14-15
LACE TRIMS	15-16
LACE APPLIQUES	17-18
ELASTICS & STRAPPING	18-22
FASTENERS, CONNECTORS, HOOKS & CLIPS	
SLIDERS & RINGS	23-24
G-HOOKS LARGE & SMALL	24
CLIPS, CLICKERS & CONNECTORS	25
CRYSTAL COLLECTION	25-26
HOOKS AND EYES	27
ACCESSORIES & GIFTS	26
NOTIONS & TOOLS	27-29
FOAM CUPS	29
UNDERWIRES	30
WIRE CASING	31
SEPARATORS & V-WIRES	31
BONING	32
CORSET SUPPLIES	33
LAST CHANCE ITEMS	34
HOW TO ORDER	35

Books, CDs and DVDs

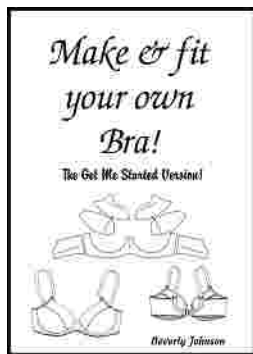
THE BRA-MAKERS MANUAL



Finally! Everything you have wanted to know about making bras, but couldn't find the information! This is the first book of its kind written as a textbook for the professional made-to-measure bra-maker but those home sewers who are up for a bit of a challenge will find this book a complete reference on bra design, draft, fit and construction. Even if you never sew a bra for anyone else, you will thoroughly enjoy making your own well-fitting and supportive bras. Author Beverly Johnson explains how to obtain the pattern for your bra, and there are many sources, and how to change that one basic pattern into a library of bra styles and designs. You will learn to fit like a pro, how to choose and control fabric, and how to duplicate all of the professional techniques you see in ready to wear, including strapless, nursing and mastectomy bras. There are optional patterns to purchase that were developed for use with this book. Please see the pattern section for the new Classic Bra pattern. 240 pages, 4 in colour. You can also buy the book on CD - it is a non-printing version.

- QB-100 The Bra-makers Manual 85.00
- QB-102 Das BH Buch (German Version)..... 85.00
- QB-101 The Manual on CD..... 45.00

MAKE & FIT YOUR OWN BRA - NEW!



By the same author of the Bra-makers Manual, it's a bra class at your fingertips! Step-by-step instructions with large print, diagrams and photos of how to make and fit your own bra. Written to be used with any bra pattern, this book is perfect for bra-making teachers or beginning enthusiasts, as it contains instructions for altering fitting challenges for the full band bra. 48 pages.

- QB-200 Make & Fit..... 30.00

LINGERIE SECRETS DVDs

Learn to sew beautiful lingerie in your own home! Learn about fabrics, elastics and sewing secrets. There are two different topics from the same author. Actually see the pattern changes, cutting and sewing techniques.

- QX-501 Panty DVD
- QX-502 Camisole/ Nighty DVD
- QX-500 Camisole/Nightie Video.....20.00

MAKING BEAUTIFUL BRAS

Author Lee-Ann Burgess has devised methods for copying your own perfect-fitting bra. She shares that process with us in a clear, well explained and extremely well illustrated manner. Do you have a bra that "almost fits"? The author offers practical solutions to making the cup a little smaller, a little larger, straps that don't fall off and bands that fit. You'll be amazed at the number of minor alterations that can change a not-so-great bra into a comfortable, supportive bra that fits you like a glove.



Every type of bra construction method, whether using underwires or not, is found in this book. All the information about fabrics, findings and elastics - how to apply them and then vary them for fashion or special needs. Professionally illustrated, with clean printing and clear explanations, what else can I say?

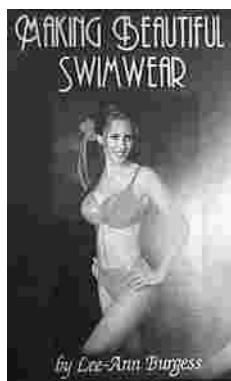
- QL-100 Making Beautiful Bras
- QL-101 Making Beautiful Bras DVD.....70.00

BEAUTIFUL LINGERIE

If you have longed for beautiful lingerie but have let the boutique price stop you, this is the book for you. You can make your own exquisitely detailed teddies, camisoles, slips and panties at a fraction of the cost of ready-to-wear. This book also includes all the patterns in sizes XS-XL and has all the instructions to duplicate designer details you see in the shops.



- QK-900 Beautiful Lingerie25.00



MAKING BEAUTIFUL SWIMWEAR

For any woman who longs for a comfortable, supportive swimsuit, this book promises a perfect-fitting swimsuit made from your bra and it delivers! Once again, Lee-Ann Burgess is going to use a set of bra cups from a ready-to-wear bra as the basis for the swim pattern. Can't find a bra to fit? That's OK, too as Lee-Ann offers solutions to alter the bra cups to fit you perfectly and takes you through the process of drafting a swimsuit custom made for your body. You'll learn about fabrics, linings, bra cups and everything else you would want to know about swim (or even any type of athletic wear). This is the book to have for a swimsuit for yourself, or your family members.

- QL-200 Making Beautiful Swimwear70.00

Bra-making Kits

BRA-MAKING KITS

We offer kits with all the basic “stuff” to make bras, perfect for the first-time bra-maker or for bra-making teachers. Materials in the kit include fabrics for the cups and the back; bottom, top and strap elastics, neckline trim, channelling, hooks & eyes and strap adjusters, enough for two bras. **The pattern and the underwires are NOT included.** The SMALL kit will do sizes shown in yellow on the chart below, all others take the LARGE kit.

We will also make a coloured kit from fabric we have in stock. Please specify your colour choice and we will create a double kit that co-ordinates with it. Please ask Customer Service!

- KC-1.10 Small Kit White
- KC-1.98 Small Kit Black
- KC-1.82 Small Kit Beige
- KC-1.15 Small Kit Off-white
- KC-1.40 Small Kit Pink
- Small OTHER colour (specify)



- KC-2.10 Large Kit White
- KC-2.98 Large Kit Black
- KC-2.82 Large Kit Beige
- KC-2.15 Large Kit Off-white
- KC-2.40 Large Kit Pink
- Large OTHER colour (specify)..... 50.00

	A	B	C	D	E	F	G	H	I	J
32	30	32	34	36	38	40	42	44	46	48
34	32	34	36	38	40	42	44	46	48	50
36	34	36	38	40	42	44	46	48	50	52
38	36	38	40	42	44	46	48	50	52	54
40	38	40	42	44	46	48	50	52	54	56
42	40	42	44	46	48	50	52	54	56	58
44	42	44	46	48	50	52	54	56	58	60
46	44	46	48	50	52	54	56	58	60	60
48	46	48	50	52	54	56	58	60	60	60

Underwires sold separately on page 22

Newbies Bra-making Bundles

BOOK BUNDLE

Hungry to get started? If you purchase a combination of the Bra-makers Manual, a kit and one of the Pin-up Girls patterns, we offer the package to you at a savings of \$20. That's like getting the pattern for free! Regular price is \$155.

KB-100 Book Bundle 135.00

GET ME STARTED BUNDLE

Want a different way to save? If the Bra-makers Manual is on your wish list for later, but you still want a book to get you going, we will bundle the Make & Fit your Own Bra book, with any Pin-up Girls pattern and a bra-making kit, for a total price of \$90 - a savings of \$10.

KB-200 M&F Bundle..... 90.00

Full Band Patterns

Full band bras have a band - narrow or wide - that runs along under the cup and continues to form part of the back of the bra. These full band bras can be made without wires - even if the pattern calls for them. We recommend underwire channelling to cover the seam between the cup and the band as this is a bias seam and tends to stretch. The channelling prevents this and makes a neat seam finish as well.

CLASSIC BRA



A beautifully fitting bra from the Pin-up Girls! This classic full band bra can be made with or without underwires and has great lift and support. It has been specially designed to use with Simplex and other low-stretch fabrics, which give the best support and a flattering profile. This is the pattern featured in The Bra-makers Manual. The pattern has two views - one with lace trim on the upper cup and one made without lace. Both views use fabric for extra comfortable straps. This pattern is available in lots of sizes. Be sure to pick the size range that suits your needs. Patterns have 20 sizes included in each envelope!

- P-1225 Cup Sizes A, AA, AAA in band sizes 30-40
- P-1230 Cup Sizes A to D with band sizes 30-38
- P-1235 Cup Sizes E to H with band sizes 30-38
- P-1240 Cup Sizes A to D with band sizes 40-48
- P-1245 Cup Sizes E to H with band sizes 40-48

Each pattern.....20.00

FULL BAND

A diagonal-seam bra with full band and optional lace trim can be worn with or without wires. Pattern contains all sizes 32A through 42DD.
P-645.....18.00



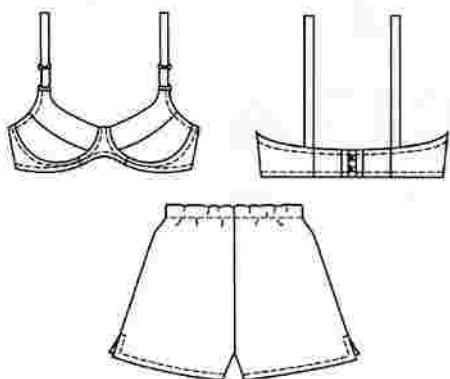
FULL BAND LARGE SIZES



Full Band for Larger Women with Underwires, and Back Closure. If you have larger breasts, comfort them in style! Optional lace trim on upper cup or use all fabric. Sizes 42C through 48FF in one envelope.

P-520 Full Band 18.00

DEMI BRA AND BOXERS



Bra and Boxer Shorts Pattern is designed for all cotton (woven) fabrics, but you can use fabrics such as Simplex with low stretch, too. Sizes 32A/B/C to 38/A/B/C in one envelope.

P-2489 Demi Bra/Boxer..... 12.00

FULL BAND BRA



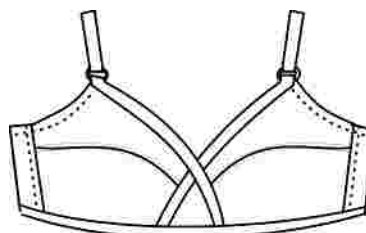
A basic pattern in a full banded style with your choice of all-lace cups or fabric cups with lace trim. Because the full band runs under the cups, the choice is yours to use wires in it or not. Sizes 32A-D through to 40A-D all in one envelope.

P-101 Full Band18.00

Non-wired Bras

Non-wired bras are just that - they are made to be worn without wires - and are designed not to hold them. For women who don't find wires to their liking, these patterns may be just the thing. We offer a selection of regular and sports bras.

CROSSOVER BRA

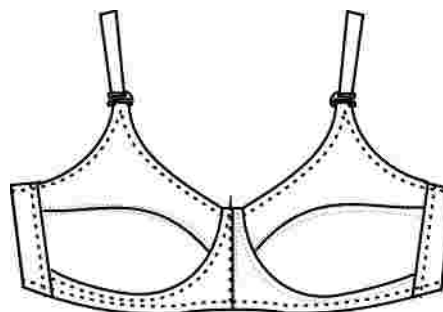


A "cross your heart" type bra without wires, for the best in comfort and great styling. This pattern is designed for power net (use our Satin Power net) and lace, or use other firm or low-stretch fabrics. The P-104 is the smaller size range and covers from 32A-18D to 40A-D. The larger sizes are found in P-102, covering the range of 42B-DD through 48 B-DD.

P-104 Small Crossover Sizes 32A-40D

P-102 Large Crossover Sizes 42B-48DD18.00

BASIC NON-WIRED BRA



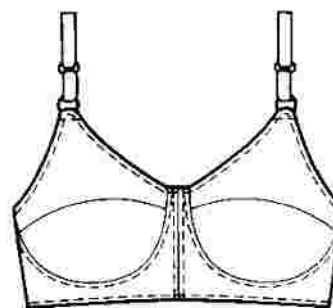
A basic bra, Full band & no underwire. This is the bra to go for if you don't want underwires yet desire a full support bra with both comfort and good looks.

P-1017 Small Sizes 32AA to 34D

P-1018 Medium Sizes 36A to 40DD

P-2374 Large Sizes 42C to 46DD12.00

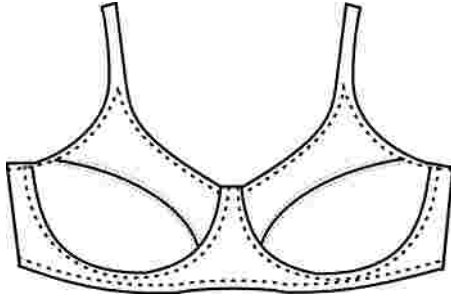
SEWN CUP BRA



Newest bra pattern available in a good range of sizes from 32AA through to 40DDD (F)

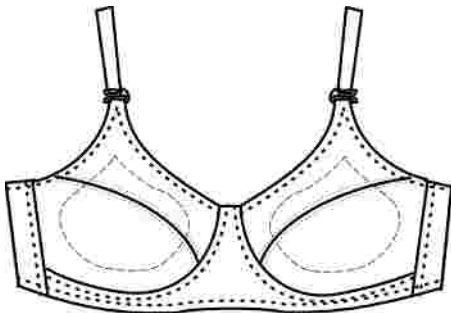
P-3594 Sewn Cup Bra 32AA-40F12.00

SOFT CUP BRA



A pattern for the full-figured woman - a stylish soft cup bra without underwires. The shape of the cup hugs the breast and the band is a good substantial one, with the straps coming down to form part of the hook and eye closure. This makes for a very supportive back and the straps rarely fall off the shoulders. Sizes 44C-48F included in one envelope.
 P-107 Soft Cup 18.00

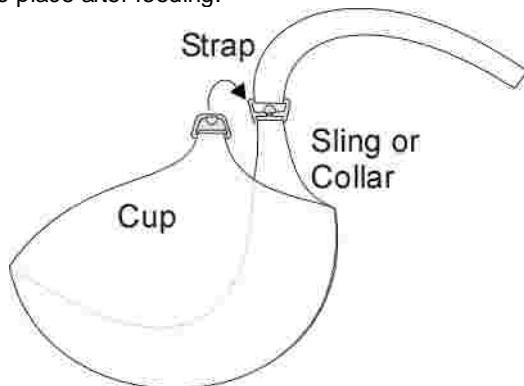
NURSING BRA



A nursing bra is available for the larger sizes. Everyone knows that you need comfort and convenience when nursing a newborn and this pattern offers both, as well as being a nice looking style you won't be ashamed to wear! See the note below on how to attach our "one-handed" nursing bra clips. Sizes 42C-F 48C-F in one envelope.
 P-108 18.00

How to Attach Nursing Bra Clips

Our one-handed nursing bra clips come in two parts - an inside part with two slots and the outside half with one slot. The inside part attaches to both the strap and the sling/collar inside the cup, while the outer section attaches to the bra cup itself. It doesn't matter if you use molded foam cups or seamed cups, partial band bra or full band; wired or not - the choice is yours! The principle of the nursing clips works perfectly, and is easy to clip into place after feeding.

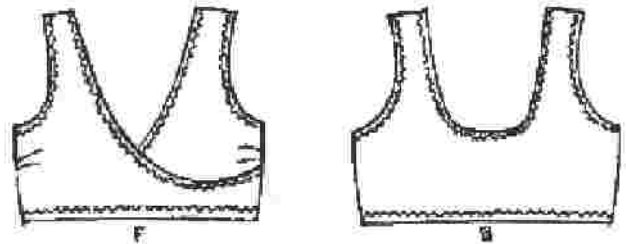


SPORT BRA AND PANTIES



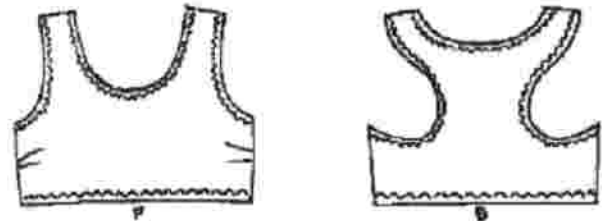
Boy cut panties have elastic waist and non-elastic legs. Two waistline heights to choose from - from just below waist high or low cut as shown. Sport or sleep bra has a double front, armhole bindings and straps with elastic as well as at top and bottom edges. The back has a hook and eye fastener.
 P-3301 Sport Bra/Panties.....12.00

CROSSOVER SPORTS BRA



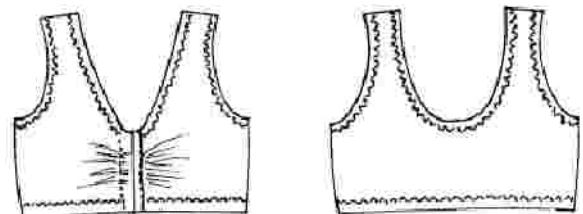
Simple to make with surplice styling. Designed for 4-way stretch fabric however we have used it with satin power net for real holding power. You can easily line the bra with cotton or one of our wickable fabrics. Sized by Bust 32"-53"
 P-710 Crossover Bra.....12.00

T-SPORT OR NIGHT-TIME BRA



Designed for 4-way stretch fabric (also called tricot knits), but we have also made it from power net for extra support. Un-sewn darts at the sides give room for the bust. Sized by full bust measurements 32-53"
 P-712 T-sport Bra.....12.00

FRONT CLOSING SPORT OR SLEEP BRA



Designed for 4-way stretch fabric (tricot knits). Gathers at the front give room for the bust. You can also make this from the wickable fabrics or cotton. The pattern comes in sizes Bust 32-53" with cup sizes A-B, C and D.
 P-714 Front Closing Sport Bra.....12.00

Partial Band

Partial band bras have no visible band that runs under the cups; they actually rely on the inclusion of underwires as part of the design. They offer great support and are exceptionally good for short-waisted women who have a "shelf" under their breast and where a full band often rolls up and may be uncomfortable.

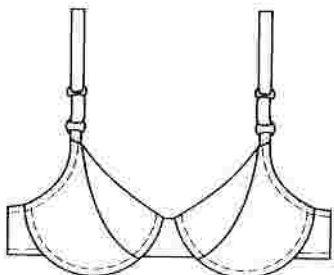
MULTI-SIZED "LINDA" PARTIAL BAND - NEW!



The Pin-up Girls are at it again! A partial band bra with wires in virtually every size. This type of bra relies on underwires as part of the support system. Great support using simplex or other low-stretch fabrics or laces.

- P-8225 Cup Sizes A, AA, AAA in band sizes 30-40
- P-8230 Cup Sizes A to D with band sizes 30-38
- P-8235 Cup Sizes E to H with band sizes 30-38
- P-8240 Cup Sizes A to D with band sizes 40-48
- P-8245 Cup Sizes E to H with band sizes 40-48
- Each pattern..... 20.00

WIRED VERTICAL SEAM BRA



Flattering vertical seam underwire partial band bra has back made from power net. Cups, bridge and straps are made from either lace and Antron jersey (called tricot) or other low-stretch fabrics. Sizes 32 A-D, 34A-D, 36 A-D and 38 B-E.

- P-3300.....12.00

WIRED PARTIAL BAND



This one is identical to the Second Skin bra from Victoria's Secret, and a pattern that can easily be converted to swimwear. Very comfortable bra with full coverage, underwires with back closure, wide Straps optional. Sizes 32A through 40DD.

- P-530 Partial Band18.00

WIRED DEMI



Underwired, with a demi cup, this little number can be made up in a jiffy. Try the optional lace upper cup as shown above or use all fabric for a change. Choose between the front closing 510 or the standard back closure pattern 511. Both sized from 32A through 40DD.

- P-510 Front Closing
- P-511 Back Closing18.00

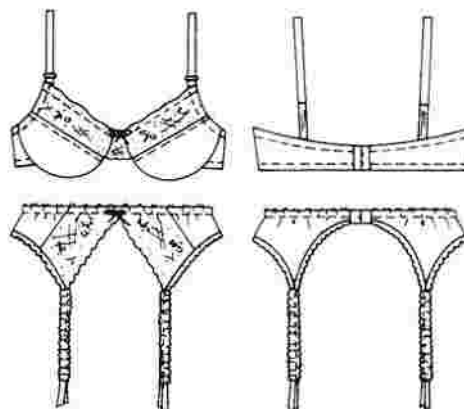
WIRED PUSH-UP



Also inspired by a Victoria's Secret style, intended for smaller breasted women. Very structured, padded push-up style, front clip with underwire, and optional push-up pads. Lace trim on upper cup. Sizes 32A through 40 C. Maximum C cup size.

- P-540 Push-up18.00

WIRED PARTIAL BAND & GARTER BELT 1



A good basic underwire bra and garter Belt, made from stretch fabric and Lace. Similar in style to the P-530 but a little more depth in the cup. Optional lace upper cup and connector. Partial band uses a back Closing. Sizes 32A to 38DD

- P-2101 Bra / Belt.....12.00

WIRED PARTIAL BAND BRA & GARTER BELT 2



What a sweet little bra and garter belt this is! Full coverage in the cups, yet the centre bridge has an optional “just barely there” option, a great place to use a fancy piece of fabric! Make cups and band from lace or a variety of fabrics. Sizes 32A through 38D included in one envelope.

P-103 Partial /Garter.....18.00

WIRED SUPER UPLIFT BRA



An uplift bra with optional lining and pad inserts. Designed for Power net (use our Satin Power net for a wonderful satiny feel) and rigid lace, this bra is a back closing version. Use all lace cups or for a different look, try all power net for a sleek styling. Sizes 32A-D through 38A-C included in one envelope.

P-105 Super Uplift18.00

Corsets & Bustiers - minimum 3

PIN-UP GIRLS FREEDOM CORSET



This well-fitting corset is so-named because of the amount of design freedom you have when constructing it. Not only can you use a traditional busk (giant loops and studs) for the front closing, but you could use a separating zipper (think crystal!) or no opening at all. The lace-up back can use pre-made grommet tape (sold on page 23) or you can set your own. Corsets are fun but surprisingly comfortable and yet so practical, especially

under a strapless gown. You'll find infinite design opportunities with this one pattern. Bust sizes 28-50 included in one envelope.

P-1407 Freedom Corset.....20.00

WIRED BUSTIER, THONG & GARTER BELT



An updated version of the Merry Widow (below) and twice as pretty. Very tailored looking with flattering curve over the tummy. Designed for stretch knits with 50% stretch. Bustier has boning, underwire bra cups, hook and eye closure at the back and optional straps made from lace and elastic. Thong style panties and garter belt are included. Sizes XS-XL included in the envelope.

P-3166 Bustier.....12.00

WIRED MERRY WIDOW

Indulge yourself! This bodysuit and Merry Widow pattern have underwire bra cups and lace trim at all edges. The bodysuit has an optional lace ruffle on the front and optional snap opening at crotch. Other accessories include a garter belt, bride's garter, hanky and lace bag. Sizes XS-L in one envelope.

P-2358 Merry Widow12.00



For Girls

How old is "old enough" to wear a bra? Depending on the age and physical development of the young lady in your life, some might need to wear a bra as young as 8 but usually by 10, it is apparent that they need one. Bras at this age are not much than cover-ups, but are vitally important to their self-esteem and feeling of "growing up".



GIRLS LINGERIE

Treat your little lady to the comforts of custom lingerie and make it to match yours! Pattern contains a training bra in sizes 30 and 32, and a camisole, crop top and 2 panty versions in girls sizes as well. All sizes included in one envelope.

P-204 Girls Lingerie.....18.00

GIRLS PANTIES

A comfortable basic design with an excellent fit. The pattern has all sizes 2 - 14 and is suitable for all cotton knits.

P-716 Girls Panties.....12.00



KIDS BOXERS

A simple no-side-seam design with elastic waist. Make these great boxers for boys or girls in knit or woven fabrics. Pattern includes all the sizes 2 to 14.

P-718 Kids Boxers.....12.00

Panties

There's nothing more comfortable than your own custom underwear. Once you have a panty pattern that fits, you can whip them up in less than 20 minutes - at a fraction of the cost of ready-to-wear! Use our tunnel elastic for the legs, or our fold-over binding for a more tailored look. Use any of the band elastics for the waist, remembering to increase the seam allowance if using elastic wider than the pattern calls for.

CLASSIC PANTY

Fits to the waist with a regular leg line and elastic finishing on all the edges. Choose cotton or Antron jersey. Designed for fabrics with minimal stretch. Comes in hip sizes 34-55"

P-720 Classic Panty.....12.00



THE SMOOTHIE

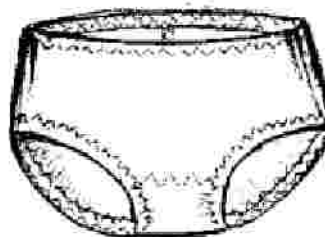
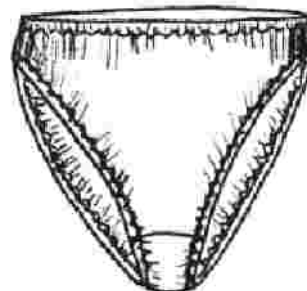
This panty is designed for 2 way stretch fabric, and fits to the waist with a forward side seam. Designed for 2 way stretch fabric. This pattern has all hip sizes 34-55" in one envelope.

P-722 The Smoothie....12.00

HIGH CUT PANTY

This panty fits to the waist line & has an attractive raised leg designs. Designed for cotton knits & nylon tricot. This pattern has all hip sizes 34"-55" in one envelope.

P-724 High Cut Panty.....12.00



BACK SEAM PANTIES

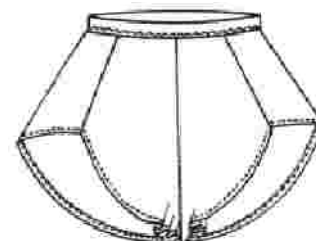
The low rise panty with a centre back seam and no side seams sits about 7.5 cm (3") below the waist. The leg edge hugs well to the body. Designed for 2-way stretch fabrics. All hip sizes 34" to 55".

P-760 Low Rise.....12.00

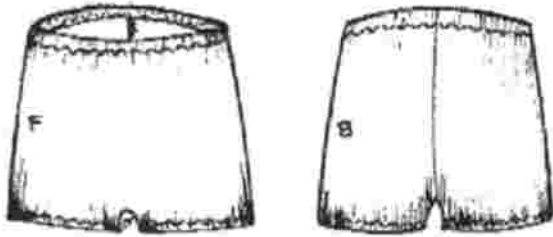
TAP PANTY

The gently flared leg shaping & front seaming combine to make this design beautifully attractive. For knit or woven fabric. Hip Sizes 34-55" included.

P-728 Tap Panty.....12.00



BOY LEG PANTY FOR WOMEN



They call it a brief, but it's really a fitted boy leg styling (not like a boxer). Centre back seam. Designed for 2-way stretch fabric. Hip sizes 34"-43"
 P-730 The Brief.....12.00

BASIC PANTIES

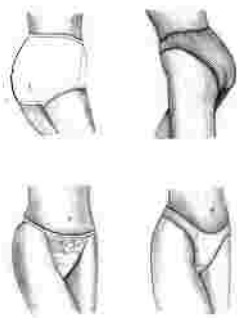


Three styles of panties all have waist and leg openings finished with elastic. Choose from regular briefs, bikini or tanga styles. The pattern is designed for fabrics with 50% stretch across the grain. Sizes XS-XL hip 32-47 included in the envelope.
 P-2908 Basic Panty.....12.00

PANTIES



This pattern comes in three styles - briefs, hipsters and bikinis. All have regular leg cut, not high cut legs, and can be made with lace motifs or lace insertion. Top edge and leg openings can be finished with either stretch lace or elastic. For best fit, measure a favourite pair of underwear you now own across the hip area and use the pattern size that corresponds to that measurement. Sizes 4-13 in one envelope.
 P-2100 Panties.....12.00

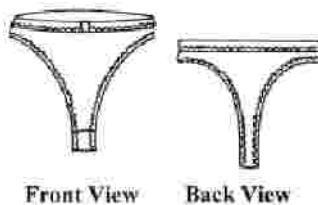


LADIES PANTIES

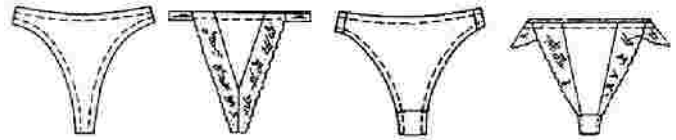
Your choice of several panty patterns, all in one envelope! High cut leg, regular leg, Front dipped (tanga style) or a string version, you'll be in panty heaven. Quite possibly the only panty pattern you need to buy.
 P-203 Lot o' Panties
18.00

THONG PANTY

This panty fits to the waist & has a very high cut front leg design & back thong styling. Use cotton rib knit, 2- way stretch fabrics or stretch lace. This pattern has all hip sizes 34-43" in one envelope.
 P-726 Thong.....12.00



THONGS & THINGS



High-cut leg thongs, tangas and string panties in four styles. The thong is finished with elastic, while the G-string has lace on the front and elastic at the waist and back. The bikini panty features high-cut legs and uses lace at the leg openings. Also a plain bikini with high-cut legs and finished with elastic. Sizes XS-Large in one envelope.
 P-2075 Thongs.....12.00

Camisoles, Slips & Nighties

EMPIRE CAMISOLE OR NIGHTIE - NEW!

Classic lines with two choices of neckline as shown at right. Simple A-line skirt is easy to sew and easy to wear.
 P-766 Empire.....12.00



NICE NIGHTIE - NEW!

Bust-hugging V-front nightie or camisole with lace trim and scoop back. The skirt part glides over the hips. Eight sizes S-XL4 in the envelope.
 P-768 Nice Nightie.....12.00



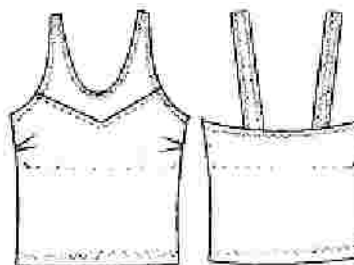
CAMISOLE, NIGHTIE & PANTIES

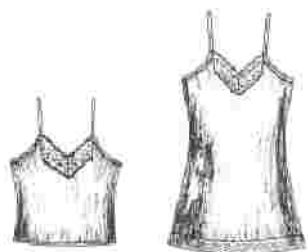
Two views of this simple nightgown, adorned with lace on both top and bottom edges. Sizes XS-XL in the envelope.
 P-3351 Cami set.....12.00



SHELF BRA CAMISOLE

Make the Shelf Bra Camisole for comfort & gentle support. Neckline edges, straps & inner bra shelf are finished with elastic. Designed for 2-way stretch fabric. Eight sizes S-XL4.
 P-762 Shelf bra cami.....12.00





CAMI OR NIGHTY
 Combine lace, elastic & straps with your choice of any knit fabric for this nightie or camisole. A bust dart gives an attractive & smooth fit. Eight sizes bust 32-51"
 P-732 Camisoles
12.00

BACK SEAM PANTIES, CAMISOLE & SLIP

A very versatile pattern containing all the basic lingerie pieces for your wardrobe. The half-slips are in three lengths and have a side slit decorated with lace. The camisole has bra cups with tucks for a smooth fit under blouses, spaghetti straps and can be trimmed with lace or plain hemmed. The panties have a choice of high-cut or regular leg, shaped centre back seam, and elastic leg openings. Sizes XS-XL
 P-2467
 Cami/Panties.....12.00



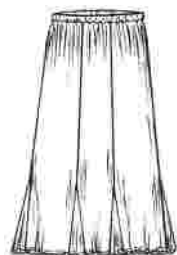
LACE PANTY & BRA CAMI

Use this pattern with our 8" lace (or 6" if you want hip hugger style) to make boutique style stretch lace panties. The matching camisole has princess seamed cups and a wide band, all from stretch lace. Three styles of panty are included, boy leg panties, thigh cut lace leg, and tanga style. You can also make this outfit from stretch fabrics Sizes XS-L (hips 32-44)
 P-3167 Lace Cami Set.....12.00



PLUS SIZES, PANTIES SLIP & CAMISOLE

Plus size camisole, half-slip and panties. Princess line camisole has edges finished with lace or narrow scalloped hems. Slip in 3 lengths with side slit. Panties have high cut or regular leg opening. Sizes 1X to 4X.
 P-2930 Plus Panties
12.00



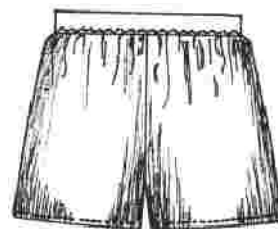
6 PANEL GODET SLIP

An elegant design for nylon tricot & light weight knits. Lace is perfect for the godets. The pattern has 2 styles (straight & flare) & 2 length choices. Sizes hip 34-55" are included.
 P-746 Godet Slip.....8.00

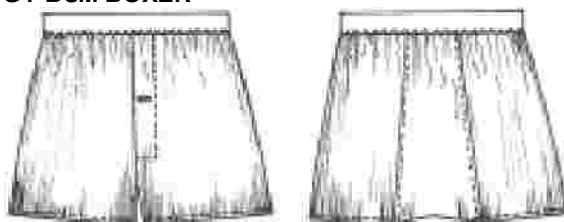
Boxers, Briefs & Leggings

THE BOXER

Easy Fitting Boxer may be made in knit or woven fabrics for men & women. The pattern comes in hip sizes 34-55" & is simple to sew. The waist is finished with elastic. A great project for beginners.
 P-756 Boxer.....12.00



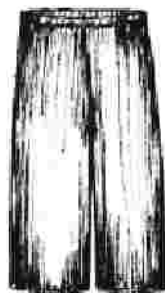
BAGGY BUM BOXER



Usually a style for men, this design features a center back panel, fly front & elastic waist. Sizes hip 34-55" in one envelope.
 P-758 BB Boxer.....12.00

BOXER BRIEF FOR MEN

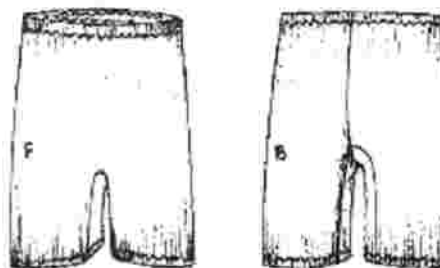
The "Boxer Brief for Men" has front & back cut all in one piece. A rectangular gusset at inside leg area & a shaped pouch at centre front, create a body hugging, comfortable fit. The front pouch may be made with or without an opening. The pattern is for knit fabrics with crosswise stretch. Included are sewing methods to create a uniquely smooth interior finish to boxers.
 P-764 B Brief for men.....12.00



LADIES PETIT PANT

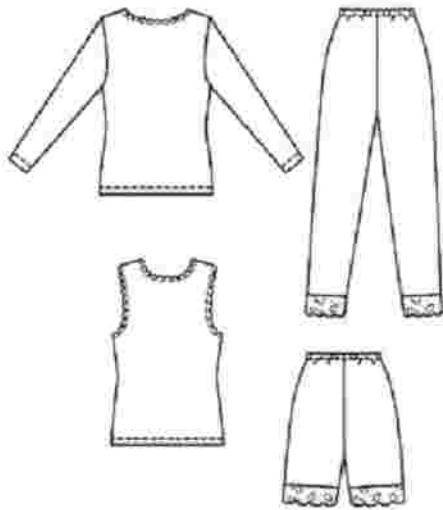
Wear these comfy pants for warmth, to prevent chaffing or as a liner under pant or skirt. The design has a side seam, elastic waist & above the knee length. The pattern includes all sizes hip 34-55".
 P-752 Petit Pant.....12.00

SHORTIE LEGGING



Yes, you can use these as bicycle shorts or to wear under summer dresses to keep your legs from chaffing. Designed for 4-way stretch fabrics. Sizes hip 34-55"
 P- 750 Shortie Legging.....12.00

WINTER WOOLIES



The best thing ever on those cold winter nights (or days at the rink). Close fitting long legged underwear, with matching undershirt. Your choice of leg length, sleeve length or sleeveless - styles that fit and keep you warm. Changing the fabric from cotton spandex to Antron will make a nice pant liner - perfect inside wool pants. Sizes XS-XL (hips 32-47) included in one envelope.

P-2702 Winter Woolies.....12.00

LONG UNDIES

Long Undies are a body hugging ankle length design. The gusset in the crotch allows for comfort & easy body movement. An elastic waist finish & rib knit cuff or lingerie elastic finishes the ankle. A unique seam method completes this pattern. The pattern comes in sizes hip 34-55".

P-748 Long Undies.....12.00



THE UNDIES TOP



As underwear, sleepwear, or sportswear, this top is pure comfort because of the side panel design Pattern includes easy fit or close fitting silhouettes with long, 3/4 & short sleeves styles. Choose a pull over or open front style & one of 3 different neckline finishes. The pattern comes in bust sizes 32-51" in one envelope.

P-754 Undies Top.....12.00

Inner Secrets



This stylish tote bag has a secret or two that make it practical for toting all your stuff to sewing class, trade shows or even as the perfect carry-on for traveling. There is an inner zippered pocket that separates the two outer pockets, as well as a front pocket -perfect for magazines- and two side pockets, great for water bottles and umbrellas. You can make this tote from almost any fabric. The outer pocket is the perfect place for border fabric, even a corset and bra appliqué, which is included in the pattern.

P-405 Inner Secrets Tote Pattern.....12.00

Tired of the "basic" bra?

OK, you've sewn a couple of bras and you have your pattern to fit perfectly! But they're still fairly simple in look and construction. Good old "basic" bras. Not that there is anything wrong with basic bras, but sometimes you want something more. Pretty. Sexy. Or pretty sexy!

Bra patterns in basic styles are merely a springboard for your creative talents. Pattern makers know what unlimited design opportunities exist once you break away from the "basic bra syndrome"! But isn't it frustrating when they say "just use your imagination". As if it was that easy!

One of the secrets to good bra design is to plan the work, then work the plan. I find it easiest for students if they can see the design options in front of them. I encourage them to collect pictures of design options they like. You may have pictures of straps, power bras, style lines, lace details etc. that you love. Then incorporate those into your next bra. Think though the construction process so you will know exactly when to insert your beautiful new details.

SAVOUR THE PROCESS! Isn't that why we sew?

Cup fabrics

Fabrics that are knitted always have some "give" (called mechanical stretch) inherent in the knitting process. But some have limited give, and as such are ideal for bra cups, and the bridge part of the band.

SIMPLEX

Use simplex single layer for lightweight but strong cups and front bridge. Simplex is technically a jersey but knitted in a unique way so it has very little give. We love it! Very easy to work with and fits like a dream. It's fairly plain, so if you want a "fancy" bra, you'll have to dress it up with lace or lace appliques.

FJ-1.10 White Simplex
FJ-1.98 Black Simplex
FJ-1.82 Beige Simplex
FJ-1.18 Cream Simplex.....18.00 m

JERSEY JACQUARD



Similar to Simplex, this lovely tone-on-tone fabric is well suited to bra-making. The designs are small in keeping with their intended garment use. Very easy to work with.

FJ-2.10 White Swirl
FJ-2.98 Black Swirl
FJ-3.10 White Daisy
FJ-3.98 Ivory Daisy.....18.00 m

DUOPLEX - NEW!

The newest fabric to grace our shelves! Duoplex is a reversible fabric (shiny on one side - matte finish on the other) Duplex comes in some great colours, it's 100% polyester non-stretch, so it is supportive and strong enough for the largest cups. Pair the colours here with our new Regency Power net. They match!

FJ-6.10 White
FJ-6.47 Cool Red
FJ-6.93 Grey
FJ-6.8 Navy Blue
FJ-6.71 Turquoise
FJ-6.69 Indigo
FJ-6.26 Dijon Gold
FJ-6.79 Forest Green
FJ-6.50 Black Cherry
FJ-6.64 Bluebird Blue
FJ-6.98 Black.18.00 m

BONDED JERSEY- NEW!

We were able to get two lovely fabrics bonded to Sheer cup lining for the most supportive and lightweight cups possible. The white one has very tiny white flowers in the white fabric.

FJ-5.34 Bonded Jersey Shell Pink
FJ-5.10 Bonded Jersey White Flowers.....20.00 m

ANTRON JERSEY

Our Antron 3 is Perfect for Slips, Panties, Bra Cups, Nighties, Camisoles and other Lingerie Projects. Non-static. Can also be used as a lining fabric to support other fashion fabrics.

FJ-4.10 White
FJ-4.98 Black
FJ-4.82 Beige
FJ-4.20 Ivory
FJ-4.40 Pink..... 12.00 m

One-way stretch

Spandex blend fabrics come in different weights - some are lightweight (panty weight), and some are heavier, and some in between. The light to medium weight can be used alone for panties, camisoles and teddies. They can also be used for bra cups and backs if you are of a smaller size. Use them double layer for more strength. 58-60" wide. Lengthwise stretch.

PLAIN RASCHEL

FR-31.10 White
FR-31.20 Ivory
FR-31.47 Cool Red
FR-31.82 Nude
FR-31.89 Sable Brown
FR-31.98 Black..... 24.00 m

LIGHTWEIGHT STRETCH SATIN

FR-11.10 White pantyweight
FR-11.98 Black pantyweight
FR-11.20 Ivory pantyweight
FR-11.30 Champagne pantyweight
FR-11.40 Pink pantyweight
FR-11.45 Red pantyweight
FR-11.50 Lilac pantyweight
FR-11.83 Beige pantyweight.
FR-11.15 Off-white pantyweight
FR-11.74 Sage green pantyweight..... 24.00 m

MEDIUM-HEAVYWEIGHT STRETCH SATIN

FR-51.78 Dark Moss Green mediumweight.
FR-51.82 Beige Heavyweight
FR-51.74 Sage green heavyweight
FR-51.89 Sable brown heavyweight
FR-51.90 Light grey (silver) heavyweight
FR-52.4544 Fuchsia Stripe (shown below)..... 24.00 m

TONE ON TONE FABRICS



These fabrics are well-suited to making bras and panties. Designs are tone on tone and directly from the ready-to-wear mills. 60" wide.

FR-41.10 White trailing floral vine
FR-41.80 Golden Beige trailing floral vine
FR-91.30 Champagne Tulips..... 24.00 m

PRINTED FABRICS - NEW!

Try one of these exiting fabrics today! You may wish to use these with another fabric for heavier cups. 60" wide nylon spandex.

- FT-9.83 Giraffe (shown below)
- FT-9.86 Leopard Skin (shown below)
- FR-32.7169 Turquoise/Indigo Stripe
- FR-32.8543 Brown/Rose Polka Dots
- FR-6.77 Lime Green with Small Black Skulls.....24.00 m



Giraffe Fuchsia Stripe Leopard

Four-way stretch

MATTE FINISH MICROFIBRE TRICOT

Microfibre - the fabric of the century. Lightweight, easy to work with and feels so nice, almost cool against the skin but with good stretch. It has a plain matte finish.

- FT-3.10 White
- FT-3.98 Black
- FT-3.82 Beige
- FT-3.20 Ivory
- FT-3.30 Champagne.....24.00 m

FILIGREE FLORAL JACQUARD



Classy looking floral design on a classic fabric. This jacquard is a tricot (4 way stretch) fabric. Perfect for panties!

- FT-1.20 Ivory.....24.00 m

Band fabrics

REGENCY POWER NET - NEW!

Our newest support fabric for the band. Very firm and feels good, too. Colours were chosen to match Duoplex and other colours in our collection. Firm stretch lengthwise.

- FP-8.10 White
- FP-8.52 Warm Red
- FP-8.47 Cool Red
- FP-8.69 Indigo
- FP-8.50 Black Cherry
- FP-8.26 Dijon Gold
- FP-8.98 Black.....25.00 m

SATIN POWER NET

Power net is essential for the sides and backs of bras and in panty girdles, but I like it for the tummy control panel in dress pants, too! Satin power net is the commercial fabric used for bra bands and control panties - very satiny and smooth, but lots of holding power. This is the one to use! 60" wide. Stretches lengthwise.

- FP-5.10 White
- FP-5.98 Black
- FP-5.30 Champagne
- FP-5.82 Beige
- FP-5.20 Ivory
- FP-5.15 Pearl (Off-white) 24.00 m

REGULAR POWER NET

Power net in this weight is extremely hard to find - and when we can get our hands on it - we jump for joy! This power net is the firmest - firm enough for girdles and compression garments. We have limited stock and colours, so get it while it lasts.

- FP-1.10 White
- FP-1.98 Black
- FP-1.82 Beige
- FP-1.40 Pink 24.00 m

SHEER POWER NET

This light-weight see-through fabric has a surprisingly good amount of firm control. The bad news is, we could only get it in one colour. The good news is, it can be dyed, or used as is. It's a great colour.

- FP-2.80 Beige..... 24.00 m

FIRM & SHINY POWER NET

It's back! We were able to get some of this firm and shiny power fabric for the bands of bras. It's perfect when teamed with cups and/or bridges that have a bit of shine.

- FP-7.10 White
- FP-7.15 Off-white 24.00 m

Cottons & Wickables

COTTON JERSEY

A lightweight, all-cotton single knit that is a classic fabric for intimate apparel. Use as a crotch lining with other panty fabrics or use as bra cup lining for those with sensitive skin. 60" wide.

- FC-2.10 White
- FC-2.98 Black.
- FC-2.20 Ivory
- FC-2.40 Pink18.00 m

COTTON SPANDEX

60" wide cotton with just enough Spandex to make it a firm stretch fabric. Ideal for use in sport bras and undies, long undies and everyday bras.

- FC-5.10 White
- FC-5.98 Black
- FC-5.82 Beige
- FC-5.20 Ivory
- FC-5.91 Heather Grey..... 20.00 m

WICKABLE & ANTI-BACTERIAL FABRIC

Use our wickable for the most comfortable sports bras. It sews up easily, is easy to care for and best of all, keeps you cool, no matter what you are doing! Anything made with Wickable does not stick to the skin so it remains cool and comfortable. The 100% polyester fibre has excellent water diffusion and wicking properties as well as being anti-bacterial. 58" wide.

- FW-4.10 White
- FW-4.98 Black
- FW-4.20 Ivory
- FW-4.75 Khaki
- FW-4.68 Navy
- FW-4.47 Cool Red 15.00 m

Lining fabrics

20 DENIER CUP LINING

Lightweight, yet strong polyester used for lining cups under delicate fabrics or laces. it is opaque, yet not heavy and very smooth on the skin.

- FL-8.82 Beige
- FL-8.98 Black..... 10.00 m

SHEER CUP LINING



Use under lace or sheer or under the bridge to stabilize the fabric. Lightweight, sheer and has no stretch in either direction. Professional quality sew-in quality, not fusible. 60" wide.

- FL-1.10 White
- FL-1.98 Black
- FL-1.32 Natural
- FL-1.40 Pink
- FL-1.47 Red 9.00 m

SHEER STRETCH MESH

Lightweight stretch mesh used for lining a cup under stretch lace, as a prosthesis pocket, or to use as a power bar. Use in dance or skating costumes where you wish to appear nude.

- FL-7.10 White
- FL-7.98 Black
- FL-7.82 Beige
- FL-7.20 Ivory..... 18.00 m

SWIMWEAR LINING

60" breathable nylon fabric that is used for lining and bra cups for lingerie and swimwear of all types.

- FL-6.10 White
- FL-6.98 Black
- FL-6.82 Beige
- FL-6.15 Off-white 16.00 m

FUSIBLE KNIT INTERFACING

Easy to use to stabilize lower cups, fabric straps and/or the centre connector. 60" wide. This one is very soft against the skin, and doesn't itch.

- FL-3.10 White
- FL-3.98 Black
- FL-3.15 Off-white 12.00 m

FUSIBLE CUP PADDING



If you wish to pad your bra, use this thin, fusible pad which allows you to pad as many layers as needed in just the right areas. Machine washable and dry cleanable. 45" wide white.

- FF-1.10 Fusible Padding..... 10.00 m

WONDER UNDER FUSIBLE WEB

We use Wonder-under to fuse two layers of lightweight fabrics together to make one supportive fabric, or fuse one fashion fabric on the outside and simplex on the inside. Tip - You should fuse a one-way to a one-way and a four-way to a four way. You will not have good results fusing one-way to four-way.

- FF-9.00 Wonder Under 4.00 m

PRE-FINISHED PADDING



We wanted a non-itchy padding for padded bras and swimwear. We are pleased to offer you the finest in the industry. Chlorine resistant foam with a light silky knit on both sides - use it for swim cups, bra cups, padded straps or interior support collars.

- FF-3.15 Off-white
- FF-3.98 Black
- FF-3.82 Beige 15.00 m

SWIM CUP FOAM

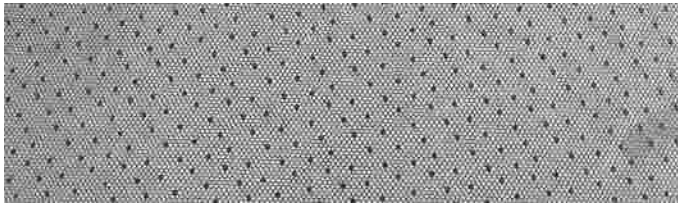


Make your own perfect fitting swim cups from your bra pattern and have it fit your swimsuit. Smaller sizes can mold the foam over a ham with the heat of an iron, larger cups simply trim the seam allowance from the cross cup seam, butt the two raw edges of the padding together, and stitch across them with a three-step zig-zag. Chlorine resistant, quick drying.

- FF-6.98 Black Swim Cup Foam
- FF-6.82 Beige Swim Cup Foam 15.00 m

Lace Fabrics

LACE VEILING



This fabric reminds of the veils on the hats my mother used to wear in the 1950s. It has a small dot at the centre of a cross-hatched pattern. I think this fabric would be beautiful layered over any coloured fabric or over foam cups.

LF-1.98 Lace Veiling Black.....20.00 m

NON-STRETCH (RIGID) LACE



This is a 45" all-over lace, perfect for bra cups that need support. The fabric does not stretch - don't let that hold you back - just use power net for the back of the bra and the lace for the cups and the bridge.

LR-3.10 White non-stretch lace (shown above)
 LR-3.29 Caramel non-stretch lace
 LR-3.30 Champagne non-stretch lace
 LR-3.34 Shell Pink & white mix non-stretch lace
 LR-3.20 Ivory non-stretch lace.....20.00 m

LIGHTWEIGHT STRETCH LACE

Beautiful and delicate stretch laces, 58" wide that are perfect used alone for camisoles, nightwear and panties. They are also ideal to use over foam cups, simplex or other supportive under layers for bras.

LL-8.10 White
 LL-8.98 Black
 LL-8.15 Off-white
 LL-8.53 Lilac
 LL-8.43 Rose.....20.00 m

POWER LACE WITH TWO FINISHED EDGES

Don't let the delicate look of the fabric fool you - this fabric has great holding power! Two edges finished with embroidered flowers would be perfect on an upper cup - the all-over design will make the lower cups and the band. 28" wide

LP-7.40 Pink
 LP-7.37 Coral
 LP-7.81 Dark Beige 9.00 m

FIRM STRETCH LEAF LACE



Firm stretch Nylon/spandex fabric - perfect for bra cups as well as bra bands, bodysuits and control panties etc.

LF-1.10 White Leaf lace (shown)
 LF-1.98 Black Leaf Lace 20.00 m

FIRM DIAMOND LACE



Fabric with a diamond - almost an argyle - type of design. Very little stretch, so it would be very supportive for cups.

LF-4.10 White Diamond (shown)
 LF-4.98 Black Diamond..... 20.00 m

FIRM STRETCH LACES



Two beautiful fabrics, both of which we have used successfully for bras. The Buttercup floral is a sheer and firm lace.

LF-7.80 Nude & Ivory 2 tone lace (shown above)
 LF-6.22 Floral buttercup yellow 20.00 m

POWER LACE



Looks like lace - acts like power net! Use this alone in the band, or for the entire bra - cups and all.

FP-5.41 Pink paisley (shown above)
 LP-5.82 Beige floral 24.00 m

Stretch Lace Trims

7/16" WIDE STRETCH LACE TRIM



Use for the upper neckline edge of bras. The small floral design really looks nice sewn either inside the seam allowance or sewn over the right side of the fabric.

- LS-05.10 White
- LS-05.98 Black
- LS-05.30 Champagne
- LS-05.15 Off-white 1.50 m

1" - 1.5" STRETCH LACE



For waistbands of panties and along the top edge of camisoles. This is a good all-purpose lace edge that can be sewn flat or over a serged edge.

- LS-10.98 Black 1"
- LS-10.20 Ivory 1"
- LS-13.20 Dark and light Ivory mix 1"
- LS-15.10 White 1.5" 2.00 m

2" - 3" STRETCH LACE



For insertion in panties and along the top edge of bras. Works well on the bottom edges of slips, knickers and pantaloons, too.

- LS-20.20 Ivory galloon 2"
- LS-22.10 White 2 1/4"
- LS-22.49 Cinnabar 2 1/4"
- LS-25.10 White 2 1/2"
- LS-25.32 Natural 2 1/2"
- LS-25.16 Pearl 2 1/2"
- LS-25.98 Black 2 1/2"
- LS-25.64 Blue/rose mix 2 1/2" (shown above)
- LS-30.10 White 3"
- LS-30.25 Goldenrod 3"
- LS-30.40 Light rose 3"
- LS-30.43 Dark rose 3"
- LS-30.81 Dark Beige 3" 2.50 m

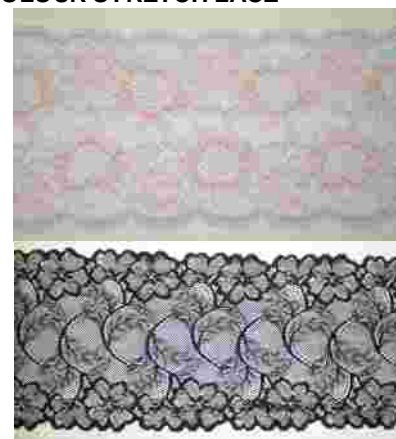
6" SOLID COLOUR STRETCH LACE



Our 6" laces are shaped on both edges, used mainly for upper bra cups, a dramatic lower edge on slips, or as a centre panel in teddies and panties.

- LS-60.10 White
- LS-60.16 Pearl
- LS-60.20 Ivory
- LS-60.40 Light Pink
- LS-60.44 Raspberry
- LS-60.58 Deep Purple (shown here)
- LS-60.47 Red
- LS-60.68 Sapphire
- LS-60.98 Black
- LS-60.82 Beige
- LS-60.38 Coral (shown here)
- LS-60.48 Garnet
- LS-60.54 Amethyst
- LS-60.60 Ice Blue 5.00 m

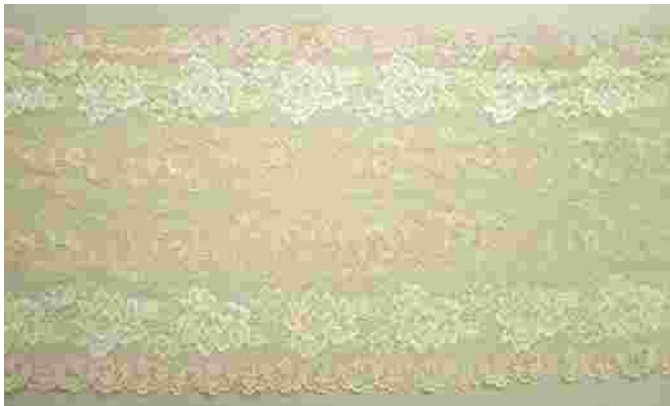
6" MULTI-COLOUR STRETCH LACE



Multi-colour laces perfect for the upper cup - even the band - of bras. Use them also for panty inserts!

- LS-63.80 Beige & Ivory mix
- LS-63.37 Coral & Ivory Mix
- LS-63.40 Pink & white mix
- LS-63.61 Blue & lilac mix
- LS-63.76 Variegated Green & white mix
- LS-63.43 Black and Rose Mix
- LS-63.46 Black & dusty rose
- LS-63.33 Black & Pale rose mix (shown below)
- LS-63.60 Blue & coral mix (shown above)
- LS-63.93 Black & Grey mix 5" 6.00 m

8" - 12" STRETCH LACES



Perfect for those all new wide lace panties with fancy waist and leg openings such as P-3167. Or use the edges to finish the top edges of a bra or camisole.

- LS-8.10 White
- LS-8.98 Black
- LS-8.30 Champagne
- LS-99.35 Shell Pink and ivory (shown here)
- LS-99.93 Black & Grey mix 8.00 m

Non-stretch Lace Trims

NON-STRETCH "LOOKS LIKE LACING" TRIM



Want the look of a lace-up front or back - without doing the actual work? This trim is perfect for bustiers, renaissance costumes and corsetry - in regular dresses and blouses too.

- LT-14.10 White
- LT-14.98 Black..... 3.00 m

.5" - 1.5" NON-STRETCH EDGING



A classic edging for the neckline of upper cups or the bottom edge of a slip or camisole.

- LT-05.30 Champagne 1/2" neckline lace edging
- LT-15.10 White 1.5" (shown above)
- LT-15.16 Pearl 1.5"
- LT-15.87 Espresso 1.5"
- LT-15.98 Black 1.5..... 1.50 m

6" SOLID COLOUR NON-STRETCH LACE



Nice wide lace that does not stretch for extra holding power on upper or lower cups. It could be extended to the side seam, but do not go any further back, it will not stretch around your body.

- LT-61.10 White (shown here)
- LT-61.33 Apricot Swirl
- LT-61.98 Black
- LT-61.20 Ivory
- LT-61.30 Champagne
- LT-61.35 Apricot Floral..... 5.00 m

6" MULTI-COLOUR NON-STRETCH LACE - NEW!



- LT-62.40 Light Pink & Pink mix
- LT-62.41 Pink & Dark Pink mix
- LT-62.59 Eggplant & Burgundy mix
- LT-62.61 Light Blue and Mint green Mix
- LT-62.22 Yellow & Mint Green mix (shown here)
- LT-62.60 Light, medium and Navy Blue mix..... 6.00 m

8" NON-STRETCH LACE - NEW!



- LT-81.10 White (shown here)
- LT-82.32 Dijon and Gold Rose Edge
- LT-82.60 Ice Blue and Ivory Floral Edge
- LT-82.78 Variegated Moss Green Edge
- LT-82.26 Orange sherbet & Pale yellow mix
- LT-82.22 Yellow & Mint Green mix..... 8.00 m

Lace Appliqués

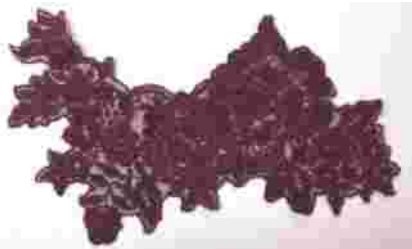
EMBROIDERED BOUQUET



We used this 4" wide embroidery on the upper cups of a cream coloured simplex bra. It was gorgeous! Even though it is not technically a matching pair, you can use it as a set and it looks just fine!

LA-21.34 Shell Pink2.00

EMBROIDERED LACE APPLIQUE



A single large appliqué that could be used as a central motif on panties or a robe or a slip. 8" wide x 5" tall

LA-38.89 Sable Brown.....2.00

EMBROIDERED BOUQUET SET



A pair of mirrored embroideries on organdy fabric. These are appropriate for panties, upper cups or corsets. Each is 6" wide by 3" tall.

LA-60.10 White

LA-60.98 Black.....3.00 pr

EMBROIDERED FLORAL SET



I could see this embroidery as the focal point on the upper cup of a bra, with the high point coming at the strap area. 5.5" wide x 3" high.

LA-55.10 White2.00

PAISLEY PAIR - NEW!



Our newest embroidered appliqué. Use as a pair on any kind of bra design, cami, panty or other lingerie.

LA-45.10 Paisley Pair White3.00 pr

EMBROIDERED STRAP DÉCOR



As detail running across the upper cups and up the straps, this matched set is beautiful. Delicate light brown colour that looks good against beige or on cream, even dark brown.4.5" wide - strap 6" long

LA-24.82 Light Brown strap set4.00

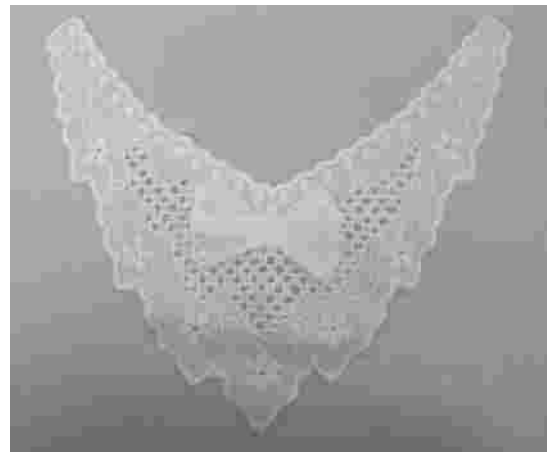
BLACK V-LACE - NEW!



Picture this as the focal point on a camisole, thong or tanga or even an integrated bridge bra. 5" total width 6" high

LA-32.98 Black V- lace.....3.00

EYELET PANTY/CAMI TRIM - NEW!



Girly-girls will love this cotton eyelet appliqué for tangas, baby doll fronts or camisoles. 6" wide x 6" high

LA-35.10 Eyelet insert white2.00

DECOLLETE RIBBONS



Perfect as the top decoration on a camisole or panty front. Simply zig-zag around the edges and cut away the fabric underneath.

LA-85.98 Black.....2.00

STITCHED V-FRONT



Simple and classic lingerie trim for camisoles, panties and other lingerie. 5" wide by 3.5" high.

LA-53.10 White1.00

EMBROIDERED CAMI INSERT



Sew this cami insert to the top of a camisole or panties and trim the fabric from behind. What a wonderful feature for your custom made lingerie. 8" wide x 3.5" tall.

LA-83.98 Black

LA-83.18 Natural/cream/ ivory2.00 ea

STITCHED SWAG

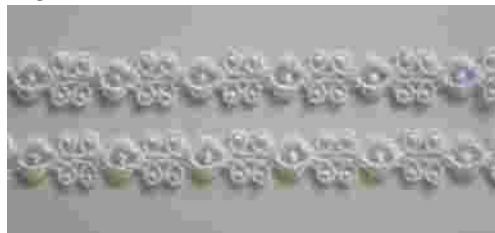


Beautiful tailored design for camisole fronts, pajama tops or panty fronts. A full 8" wide by 6" tall.

LA-80.10 White2.00

Non-stretch Strap Trim

GUIPERE STRAP TRIM



Another great lace trimming for your straps. How to apply? Simply zig-zag over the edges with a fine matching thread to hold it securely to a base of ribbon or strap tape.

LT-04.10 White Guipere

LT-04.15 Off-white Guipere 2.00 m

VINE STRAP TRIM



Delicate vine trim that can be used alone for straps or as an overlay on top of strap tape or fabric to provide Euro styling to your straps. Can also be used along the neckline edge. 3/4" wide (20 mm)

LT- 07.30 Champagne 2.00 m

STRAP GALLOON



We used this lace with ribbon woven through the centre holes for beautiful straps.

LT- 12.32 Natural..... 2.00 m

VIOLET STRAP TRIM



Lush embroidered violet strap trim for straps and neckline edges. Beautiful champagne colour that looks good against ivory and nude.

LT- 13.21 Dark ivory 3.00 m

ROSEBUD STRAP TRIM



Picture this delicate rosebud trim running up the straps of your beautiful bras or nightwear. Use alone or over a base of ribbon or strap tape.

LT-02.10 White

LT-02.20 Ivory

LT-02.42 Hot Pink

LT-02.98 Black.....2.00 m

Tunnel Elastics

TUNNEL ELASTICS

These elastics are professional quality and chlorine resistant. It does not lose its stretch even with repeated wearing and washings. It is intended to be used in a casing or turned under. Use the narrow for armholes and legs of swimwear, and the wider for the bottoms of sports bras.

1/4" TUNNEL ELASTIC

ET-9.10 1/4" White..... 1.00 m

1" TUNNEL ELASTIC

ET-25.10 1" White
ET-25.98 1" Black..... 1.50 m

1 1/4" TUNNEL ELASTIC

ET-32.10 1" White
ET-32.98 1" Black..... 2.00 m

1 1/2" TUNNEL ELASTIC

ET-38.10 1" White
ET-38.98 1" Black..... 2.50 m

PANTY LEG ELASTIC

Soft against the skin, so it's perfect for the legs of panties when used as facing elastic. It won't ever be too tight around the legs. It's also a great width for this area, too. It is not a strong holding elastic, so please don't use this for bra band elastic.

ET-1.10 White
ET-1.30 Champagne 1.00 m

CLEAR ELASTIC (MOBILON)

Clear Chlorine resistant elastic made from latex-free polyurethane with excellent retention even when stitched through. It grips the skin while wearing, perfect for dance and skating costumes where elastic ride-up is most inconvenient. Use behind stretch lace to keep the lace from gapping.

EM-2.00 1/4" (6 mm) Clear
EM-3.00 3/8" (10 mm) Clear
EM-4.00 1/2" (12 mm) Clear..... 1.00 m

SWIM ELASTIC

Cotton wrapped swim elastic for legs, necklines and armhole edges of swimwear. This chlorine resistant elastic can be serged or zig-zagged to the inside edge, then turned and stitched with a twin needle or cover stitch machine.

ET-80.32 1/4" width
ET-81.32 3/8" width..... 1.00 m
ET-82.32 1" width 2.50 m

Seam Tapes

BIAS CUT SEAM COVERING

To cover the inside cup seam - simply lay the covering over the open seam and stitch close to the seam on both sides. Trim off the excess - the seam will curve nicely without irritation.

TB-45.10 White
TB-45.98 Black
TB-45.82 Beige, per roll..... 4.00

STRAIGHT CUT STABILIZER TAPE

Straight cut nylon is useful for stitching behind laces along the top edge of the bra. It is non-stretch and lightweight and keeps those fragile lace edges from waving. 15 feet per roll.

TS-90.10 White, per roll..... 6.00

Fold-over Bindings

3/16" SCALLOPED PRE-FOLDED TRIM



Tiny, delicate scallops adorn the pre-folded edge of this trim. Just zig-zag it on for a nice edge to necklines or panty legs.

EF-2.10 White
EF-2.80 Light beige..... 1.50 m

1/4" (6 mm) FOLD OVER BINDING



A classic, tailored binding that is easy, so easy to apply. Simply fold it in half along the pre-marked fold and sew it on the raw edge with a smaller sized zig-zag. Can easily double as leg elastic on panties.

EF-1.10 White 1/4"
EF-1.98 Black 1/4"
EF-1.20 Ivory 1/4"
EF-1.40 Pink 1/4" 1.50 m

1/4" SCALLOPED FOLD OVER



Just like fold-over binding but with an added touch. Pretty scallops on the finishing edge. Just zig-zag it on for a nice edge to necklines or panty legs.

EF-3.10 White
EF-3.20 Ivory
EF-3.40 Pink/White Mix..... 1.50 m

1/4" HEART FOLD OVER



Pre-folded binding with heart design woven in. The "bumps" of the heart shape form pretty bumps on the edge of the binding.

EF-6.10 White
EF-6.98 Black..... 1.50 m

3/8" (10 mm) FOLD OVER BINDING



Easy to apply and looks wonderful as a finish trim along the top (or bottom) of a bra. It's elastic! Plain edges, nothing fancy.

EF-5.10 White Shiny 3/8"
EF-5.98 Black Shiny 3/8"
EF-5.82 Beige Shiny 3/8"
EF-5.68 Navy Blue Shiny 3/8" 1.50 m

ITTY BITTY PICOT FOLD-OVER BINDING



- EF-4.10 White Matte 3/8"
- EF-4.98 Black Matte 3/8"
- EF-4.20 Ivory Matte 3/8" 1.50 m

3/4" (10 mm) MATTE FOLD OVER BINDING



Matte finish binding with scalloped edge. As any pre-folded binding, insert the raw edge of the fabric between the two layers and sew with a small zig-zag.

- EF-9.10 White 3/4"
- EF-9.98 Black 3/4" 1.50 m

Neckline & Edging

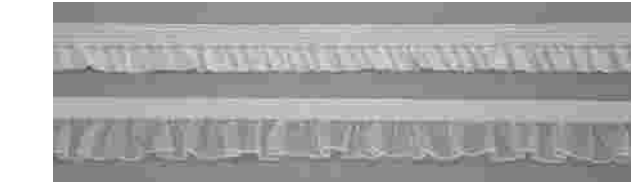
STRETCH LOOPY TRIM



Elastic with neat little loops along one edge. Use it for trim along the top edge of a bra. Elastic is 1/4" wide.

- EN-16.10 White
- EN-16.98 Black
- EN-16.15 Pearl
- EN-16.20 Ivory 1.50 m

STRETCH RUFFLE TRIM



Try this for a young, fresh look to your bras and undies! The sheer ruffle is especially pretty and adds a boutique touch to any bra neckline edge.

- EN-14.10 White ruffle
- EN-14.98 Black ruffle
- EN-14.20 Ivory ruffle
- EN-40.10 White Sheer ruffle
- EN-40.20 Ivory Sheer Ruffle
- EN-40.40 Pink Sheer Ruffle
- EN-40.45 Fuchsia Sheer Ruffle
- EN-40.47 Red Sheer Ruffle
- EN-40.51 Lavender sheer ruffle
- EN-40.77 Lime Green Sheer Ruffle
- EN-40.87 Chocolate Sheer ruffle
- EN-40.98 Black Sheer Ruffle 1.50 m

SMALL STRETCH SCALLOP TRIM



- Small 1/4" scallop stretch trim, again for necklines or seams.
- EN-8.10 White
- EN-8.98 Black
- EN-8.80 Beige 1.50 m

STRETCH BALL ELASTIC



Like a neat row of pom-poms for your neckline edges. Cute!
EN -19.10 White 1.50 m

STRETCH CROCHET TRIM



A very popular trimming for the neckline edges of bras! You will love the way it looks. May vary slightly from picture.

- EN-13.10 White
- EN-13.98 Black
- EN-13.20 Ivory
- EN-13.15 Off-white 1.50 m

1/16" STRETCH PIPING



A tiny stretchy piping edge. Perfect for necklines and seamlines.

- EN-15.10 White
- EN-15.98 Black 1.50 m

3/8" STRETCH LOOP-A-LICIOUS



What else could we call it? We love this edging along the top edges of our bras.

- EN-12.10 White
- EN-12.98 Black 1.50 m

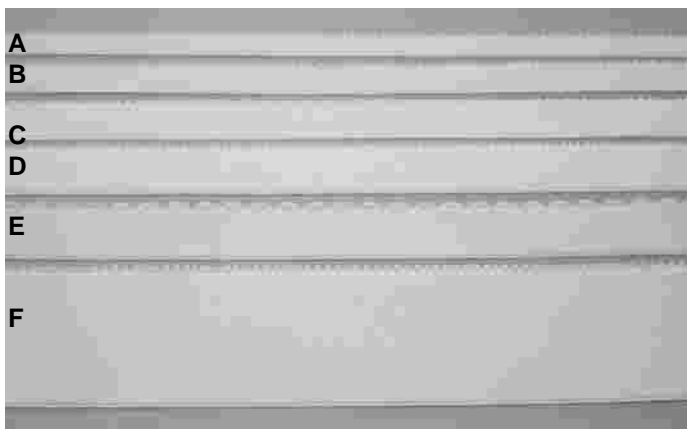
STRETCH FILLET LACE INSERTION



This 1/2" wide mesh-like trim looks quite stunning in the side seam between the front and the back. Also good for bustiers.

- EN-11.10 White
- EN-11.98 Black
- EN-11.20 Ivory 1.50 m

Band Elastics



A. 3/8" PLUSH BACK ELASTIC

Use for top edges of bras & legs of panties. The latex-free version is good for those with latex allergies.

- EB-03.30 Champagne regular
- EB-03.20 Ivory regular
- EB-37.10 White latex-free (does not dye well)
- EB-27.10 White latex-free (scalloped edge & dyes well)
- EB-37.98 Black latex-free
- EB-27.98 Black latex-free (scalloped edge)
- EB-37.82 Beige latex-free
- EB-37.20 Ivory latex-free
- EB-37.40 Pink latex-free
- EB-37.30 Champagne latex-free 1.50 m

B. 1/2" PLUSH BACK ELASTIC

Basic elastic for bottom edges of small to medium size bras, and a good choice for the waistline of panties. I prefer 1/2" for the bottom band instead of the 3/8" the patterns often call for. The latex-free version is good for those with allergies.

- EB-4.10 White regular (does not dye well)
- EB-4.98 Black regular
- EB-4.30 Champagne regular
- EB-4.82 Beige regular
- EB-47.10 White latex-free (dyes well)
- EB-47.20 Ivory latex-free
- EB-47.40 Pink Latex-free
- EB-47.82 Nude latex-free
- EB-47.81 Dark Beige latex-free
- EB-47.98 Black latex-free..... 1.70 m

C. 5/8" PLUSH BACK ELASTIC

Basic elastic for top edges of bras, and the leg of panties. Use this for added support along the bottom edge of a bra or the waistline of panties.

- EB-57.10 White latex-free (dyes well)
- EB-57.21 Dark Ivory latex-free
- EB-57.82 Beige latex-free 1.80 m

D. 3/4" PLUSH BACK ELASTIC

This is a good width for using under swimwear bra cups, or as elastic for the bottom of the band or the waistband of panties. Great support! The latex-free version is good for those with allergies.

- EB-67.10 White latex-free
- EB-67.98 Black latex-free
- EB-67.82 Beige latex-free
- EB-67.20 Ivory latex-free
- EB-67.40 Pink Latex-free 2.20 m

E. 7/8" PLUSH BACK ELASTIC

For the bottom edge of the band in larger frame or cup sizes or for the waistline of panties.

- EB-77.10 White latex-free..... 2.30 m

F. 2" WIDE ELASTIC

For the bottom edge of strapless bras, bustiers, or foundation garments, medical support garments or leggings. Minimum 10 metres.

- EB-9.10 White regular
- EB-9.98 Black regular 4.00 m

5" WIDE BRUSHED ELASTIC

Super wide brushed elastic for bottom edges of sports bra, longline bras and similar garments.

- EB-125.10 White
- EB-125.98 Black..... 5.00 m

1/2" SILICONE GRIPPER ELASTIC

We've had this elastic made for us, with a silicone bead over our regular latex-free elastic, so you can use it for strapless bras, or wherever you need the elastic to stay put!

- EG-41.10 White
- EG-41.98 Black
- EG-41.20 Ivory..... 2.00 m

Strap Elastics

Latex-free elastic for straps! Most have a satin finish on the front and a plush back for comfort, except where noted. These are sized to match up with our sliders and rings. Dyeable.



A. SPAGHETTI STRAP ELASTIC

Ideal for spaghetti straps or multiple strand straps.

- ES-1.10 White
- ES-1.98 Black..... 1.50 m

B. 1/4" STRAP ELASTIC

Ideal for spaghetti straps or multiple strand straps.

- ES-2.10 White
- ES-2.98 Black..... 1.50 m

C. 3/8" STRAP ELASTIC

- ES-3.10 White
- ES-3.98 Black
- ES-3.80 Light Beige..... 1.50 m

D. 3/8" SOFT TOUCH STRAP ELASTIC

Plush to the touch, front and back for shine-free styling.

- ES-31.10 White
- ES-31.98 Black
- ES-31.20 Ivory 1.50 m

E. 1/2" STRAP ELASTIC

- ES-4.10 White
- ES-4.98 Black
- ES-4.80 Light Beige
- ES-4.20 Ivory
- ES-4.15 Pearl (off-white)
- ES-4.81 Dark Nude
- ES-4.40 Pink 1.80 m

F. 1/2" RUFFLED STRAP ELASTIC

- Ruffled strap elastic. Co-ordinates with ruffled neckline trim.
- ES-41.10 White
 - ES-41.98 Black
 - ES-41.20 Ivory 1.80 m

1/2" SHEER INSERT STRAP ELASTIC



- Looks transparent but actually has strong sheer bands to hold the centre section to the outside border.
- ES-42.10 White
 - ES-42.98 Black 1.80 m

1/2" STRAP-A-LICIOUS STRAP ELASTIC



- Co-ordinates with Loop-a-licious...what else could we call it?
- ES-43.10 White
 - ES-43.98 Black 1.80 m

G. 5/8" STRAP ELASTIC

- ES-5.10 White
- ES-5.98 Black
- ES-5.80 Light Beige
- ES-5.20 Ivory
- ES-5.81 Dark Nude
- ES-5.40 Pink 2.00 m

H. 3/4" STRAP ELASTIC

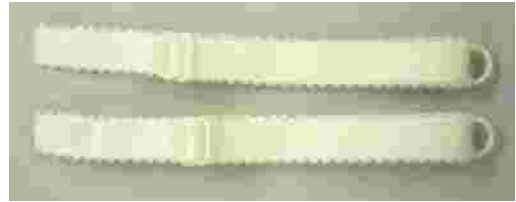
- ES-6.10 White
- ES-6.98 Black
- ES-6.82 Beige
- ES-6.20 Ivory
- ES-6.40Pink 2.20 m

J. 1" STRAP ELASTIC

- ES-8.10 White
- ES-8.82 Beige 2.30 m

Ready Made Strap Sets

READY-MADE STRAP SETS



We found some ready-made strap sets for you! The ivory sets are made from firm stretch elastic that goes well with our buttercup lace and all the ivory fabrics. All sets have the sliders and rings already on ready to sew on your new bra.

- SS-3.98 Black strap set 3/8"
- SS-5.20 Ivory strap set 5/8" (shown above)
- SS-6.20 Ivory strap set 3/4"
- SS-8.20 Ivory strap set 1" 3.00 pr

DETACHABLE ALL- ELASTIC STRAPS

Why not use fashionably coloured detachable elastic straps when wearing that new tank top? This group is made with firm strap elastic, clear g-hooks at each end and a slider for adjustment.

- SD-3.10 White 3/8" straps
- SD-3.20 Ivory 3/8" straps
- SD-3.40 Pink 3/8" straps..... 3.00 pr

Strap Tapes

All are latex-free non-stretch tapes that can be used in conjunction with strap elastic, or used alone for non-stretch strap solutions. Dyeable.



1/2" STRAP TAPE

- ST-4.10 White
- ST-4.98 Black
- ST-4.15 Off-white 1.80 m

5/8" STRAP TAPE

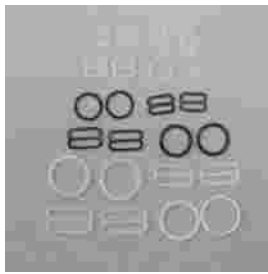
- ST-5.10 White
- ST-5.20 Ivory
- ST-5.98 Black
- ST-5.82 Beige
- ST-5.15 Off-white 2.00 m

3/4" STRAP TAPE

- ST-6.10 White
- ST-6.98 Black
- ST-6.82 Beige
- ST-6.20 Ivory
- ST-6.16 Pearl..... 2.20 m

1" STRAP TAPE

- ST-9.10 White..... 2.30 m



Plastic Sliders & Rings

Each package contains 2 sliders & 2 rings. Smaller sizes are ideal for slip or lingerie straps; 1/2" or 5/8" are standard for most bra straps; 3/4" and 1" are better for larger cups.

1/4" (6 mm) SIZE

R-2.00 1/4" Clear Plastic Itty-Bitty.....	1.00
R-2.00-S bag of 100 Sliders	
R-2.00-R bag of 100 Rings.....	20.00

3/8" (10 mm) SIZE

R-3.00 3/8" Clear Plastic.....	1.00
R-3.00-S bag of 100 Sliders	
R-3.00R bag of 100 Rings.....	20.00

R-4.10 1/2" White Plastic.....	1.00
R-4.10-S bag of 100 Sliders	
R-4.10-R bag of 100 Rings.....	20.00

R-4.98 1/2" Black Plastic.....	1.00
R-4.98-S bag of 100 Sliders	
R-4.98--R bag of 100 Rings.....	20.00

1/2" (12 mm) SIZE

R-4.00 1/2" Clear Plastic.....	1.00
R-4.00-S bag of 100 Sliders	
R-4.00-R bag of 100 Rings.....	20.00

R-4.10 1/2" White Plastic.....	1.00
R-4.10-S bag of 100 Sliders	
R-4.10-R bag of 100 Rings.....	20.00

R-4.98 1/2" Black Plastic.....	1.00
R-4.98-S bag of 100 Sliders	
R-4.98--R bag of 100 Rings.....	20.00

5/8" (15 mm) SIZE

R-5.00 5/8" Clear Plastic.....	1.00
R-5.00-S bag of 100 Sliders	
R-5.00-R bag of 100 Rings.....	20.00

R-5.10 5/8" White Plastic.....	1.00
R-5.10-S bag of 100 Sliders	
R-5.10-R bag of 100 Rings.....	20.00

R-5.98 5/8" Black Plastic.....	1.00
R-5.98-S bag of 100 Sliders	
R-5.98-R bag of 100 Rings.....	20.00

R-5.82 5/8" Beige Plastic.....	1.00
R-5.82-S bag of 100 Sliders	
R-5.82-R bag of 100 Rings.....	20.00

3/4" (18 mm) SIZE

R-6.00 3/4" Clear Plastic.....	1.00
R-6.00-S bag of 100 Sliders	
R-6.00-R bag of 100 Rings.....	20.00

R-6.10 3/4" White Plastic.....	1.00
R-6.10-S bag of 100 Sliders	
R-6.10-R bag of 100 Rings.....	20.00

R-6.98 3/4" Black Plastic.....	1.00
R-6.98-S bag of 100 Sliders	
R-6.98-R bag of 100 Rings.....	20.00

R-6.20 3/4" Ivory Plastic.....	1.00
R-6.20-S bag of 100 Sliders	
R-6.20-R bag of 100 Rings.....	20.00

1" (22 mm) SIZE

R-8.10 1" White Plastic.....	1.00
R-8.10-S bag of 100 1" Sliders	
R-8.10-R bag of 100 1" Rings.....	20.00

R-8.20 1" Ivory Plastic.....	1.00
R-8.20-S bag of 100 1" Sliders	
R-8.20-R bag of 100 1" Rings.....	20.00



Nylon-coated Metal S & Rings

These strap adjusters are metal with a fine coating of nylon which has been powder-coated and heat-set. We offer them in colours to match our fabrics, in sets or by the bag.

3/8" (10 mm) SIZE

RM-3.10 3/8" White Metal.....	1.50
RM-3.10-S bag of 100 Sliders	
RM-3.10-R bag of 100 Rings.....	30.00

RM-3.98 3/8" Black Metal.....	1.50
RM-3.98-S bag of 100 Sliders	
RM-3.98-R bag of 100 Rings.....	30.00

1/2" (12 mm) SIZE

RM-4.10 1/2" White Metal.....	1.50
RM-4.10-S bag of 100 Sliders	
RM-4.10-R bag of 100 Rings.....	30.00

RM-4.98 1/2" Black Metal.....	1.50
RM-4.98-S bag of 100 Sliders	
RM-4.98-R bag of 100 Rings.....	30.00

RM-4.20 1/2" Ivory Metal.....	1.50
RM-4.20-S bag of 100 Sliders	
RM-4.20-R bag of 100 Rings.....	30.00

RM-4.40 1/2" Pink Metal.....	1.50
RM-4.40-S bag of 100 Sliders	
RM-4.40-R bag of 100 Rings.....	30.00

RM-4.82 1/2" Beige Metal.....	1.50
RM-4.82-S bag of 100 Sliders	
RM-4.82-R bag of 100 Rings.....	30.00

5/8" (15 mm) SIZE

RM-5.10 5/8" White Metal.....	1.50
RM-5.10-S bag of 100 Sliders	
RM-5.10-R bag of 100 Rings.....	30.00

RM-5.98 5/8" Black Metal.....	1.50
RM-5.98-S bag of 100 Sliders	
RM-5.98-R bag of 100 Rings.....	30.00

RM-5.20 5/8" Ivory Metal.....	1.50
RM-5.20-S bag of 100 Sliders	
RM-5.20-R bag of 100 Rings	30.00
RM-5.40 5/8" Pink Metal.....	1.50
RM-5.40-S bag of 100 Sliders	
RM-5.40-R bag of 100 Rings	30.00
RM-5.82 5/8" Beige Metal	1.50
RM-5.82-S bag of 100 Sliders	
RM-5.82-R bag of 100 Rings	30.00

3/4" (18 mm) SIZE

RM-6.10 3/4" White Metal	1.50
RM-6.10-S bag of 100 Sliders	
RM-6.10-R bag of 100 Rings	30.00
RM-6.98 3/4" Black Metal.....	1.50
RM-6.98-S bag of 100 Sliders	
RM-6.98-R bag of 100 Rings	30.00

RM-6.20 3/4" Ivory Metal.....	1.50
RM-6.20-S bag of 100 Sliders	
RM-6.20-R bag of 100 Rings	30.00

RM-6.40 3/4" Pink Metal.....	1.50
RM-6.40-S bag of 100 Sliders	
RM-6.40-R bag of 100 Rings	30.00

RM-6.82 3/4" Beige Metal	1.50
RM-6.82-S bag of 100 Sliders	
RM-6.82-R bag of 100 Rings	30.00

1" (22 mm)

RM-8.10 1" White Metal.....	1.50
RM-8.10-S bag of 100 1" Sliders	
RM-8.10-R bag of 100 1" Rings.....	30.00



Jewelry Quality Sliders & Rings

Our gold and silver metal findings are the finest in the world - truly jewelry quality. Buy in bulk and save 20% over the single unit price.

1/4" (6 mm) SIZE

RM-2.88 1/4" Gold Metal.....	2.00
RM-2.88-S bag of 100 sliders	
RM-2.88-R bag of 100 rings.....	40.00
RM-2.99 1/4" Silver Metal.....	2.00
RM-2.99-S bag of 100 sliders	
RM-2.99-R bag of 100 rings.....	40.00

3/8" (10 mm) SIZE

RM-3.88 3/8" Gold Metal.....	2.00
RM-3.88-S bag of 100 Sliders	
RM-3.88-R bag of 100 Rings	40.00
RM-3.99 3/8" Silver Metal.....	2.00
RM-3.99-S bag of 100 Sliders	
RM-3.99-R bag of 100 Rings	40.00

1/2" (12 mm) SIZE

RM-4.88 1/2" Gold Metal.....	2.00
RM-4.88-S bag of 100 Sliders	
RM-4.88-R bag of 100 Rings.....	40.00

RM-4.99 1/2" Silver Metal	2.00
RM-4.99-S bag of 100 Sliders	
RM-4.99-R bag of 100 Rings.....	40.00

5/8" (15 mm) SIZE

RM-5.88 5/8" Gold Metal.....	2.00
RM-5.88-S bag of 100 Sliders	
RM-5.88-R bag of 100 Rings.....	40.00

RM-5.99 5/8" Silver Metal	2.00
RM-5.99-S bag of 100 Sliders	
RM-5.99-R bag of 100 Rings.....	40.00

3/4" (18 mm) SIZE

RM-6.88 3/4" Gold Metal.....	2.00
RM-6.88-S bag of 100 Sliders	
RM-6.88-R bag of 100 Rings.....	40.00

RM-6.99 3/4" Silver Metal	2.00
RM-6.99-S bag of 100 3/4" Sliders	
RM-6.99-R bag of 100 3/4" Rings.....	40.00

G-hooks

G-hooks come in many sizes. The small ones are very useful for making detachable bra straps. The larger ones are necessary for swimwear backs. Bags of 100 g-hooks are 20% off the packaged set price!



3/8" (10 mm) SIZE & 2.00

GH-3.00 Clear 3/8" 4 pack	1.00
Bag of 100.....	20.00

GH-3.88 Gold Metal 3/8" 4 pack	
GH-3.99 Silver Metal 3/8" G-hooks 4 pack.....	2.00
Bag of 100.....	40.00

1/2" (12 mm) SIZE & 2.00

GH-4.00 Clear 1/2" G-hook 4 pack	1.00
Bag of 100.....	20.00

GH-4.88 Gold Metal 1/2" G-hook 4 pack	
GH-4.99 Silver Metal 1/2" G-hooks 4 pack	2.00
Bag of 100.....	40.00

3/4" (18 mm) SIZE

GH-6.00 Clear 3/4" G hook, each.....	1.00
Bag of 100.....	20.00

1" (23 mm) SIZE & 1.50

GH-8.00 Heavy Duty Clear 1" G-hook, each	
GH-8.98 Heavy Duty 1" Black G-hook, each.....	1.00
Bag of 100.....	80.00

GH-8.88 Gold Metal 1" G-hook, each	
GH-8.99 Silver Metal 1" G-hook, each.....	1.50
Bag of 100.....	120.00

Clips & Connectors

For nursing bras, swimwear, or front/back closures of any bra - all hold securely and have a slot to feed the elastic, fabric or tape through. The size refers to the size of the tape, elastic or securing ribbon that holds the clip to the bra.

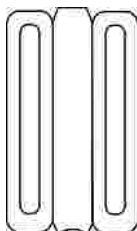


FRONT CLIPS UP TO 1" HIGH

- CS-1.10 White Cameo 3/8" (shown above)
- CS-2.00 Clear Heart 3/8"
- CS-210 White Heart 3/8" (shown above)
- CS-3.00 Clear Flower 3/8" (shown above)
- CS-4.98 Black Hinge 3/8" (shown above)
- CS-4.82 Beige Hinge 3/8"
- CM-7.00 5/8" Clear Flower (shown above)
- CM-5.10 5/8" Diamond Clips White
- CM-5.98 5/8" Diamond Clips Black
- CM-6.10 3/4" Diamond Clips White (shown above)
- CM-6.98 3/4" Diamond Clips Black
- Any medium clips each.....1.00
- 100 bulk..... 80.00

TALL CLIPS

- 1 3/8" tall front hinge-type clip for extra holding power for larger cups. One per package.
- CT-9.10 White Tall Clips
- CT-9.98 Black tall Clips
- CT-9.20 Ivory Tall Clips.....2.00
- 100 bulk, ea.....160.00



ONE-HANDED NURSING CLIPS

Nursing bra construction has never been easier. One detachable side of the clip has a slot for the cup cover - the other side has two slots - one for the strap and one for the sling inside the cup. Pkg. of 2

- CN-8.00 Clear
- CN-8.10 White
- CN-8.98 Black
- CN-8.80 Light beige
- Any colour.....2.00 pkg
- 100 bulk, ea..... 80.00



SWIMWEAR CLICKER

Professional quality clicker that sews to a bra back type of swimsuit.

- CB-7.00 Clear
- CB-7.98 Black2.00
- Bag of 100, ea..... 160.00



GARTER CLIPS

If you are making garter belts or merry widows, you'll need these. 4 garter hooks per pkg.

- CG-1.00 Clear
- CG-1.10 White
- CG-1.98 Black
- CG-1.82 Beige2.00
- 100 bulk, ea.....40.00



The Crystal Collection

CRYSTAL SNAP BUTTONS



Use these lovely crystal snaps for front closing bras as well as corsets, evening jackets or dressy tops. In black or white - you can buy this singly or by the metre (42 to a metre)

- HC-10 White
- HC-98 Black, each single set..... 1.00

CRYSTAL G-HOOK 5/8" (15 mm)

Use one of these in place of a hook and eye for an extra special back closure. It also can be used on bikini closures!

- GJ-5.99 Silver 5/8" crystal G-hook.....3.00



NINE CRYSTAL CONNECTOR

Join the top of the bra to the strap or two front halves of a bra together with this lovely crystal connector. Actual size



- CJ-90.98 Black 9 patch.....2.50 ea

CRYSTAL BRA BRIDGES

Use these production-quality crystal and white metal connectors for joining the strap to the bra, or to connect two front halves together. Also used as a side connector on swimwear and bikini panties. These are pictured actual size.



- CJ-12.99 Heart Bridge.....4.00



- CJ-22.99 Double Row Bridge4.00



- CJ-32.99 Bow Bridge.....4.00

CRYSTAL THONG JOINTS

These thong connectors are perfect co-ordinates for the bra connectors shown above. When you make your G-string, the three strings (two from the hips and one through the rise) loop over these connectors and sew down. Actual size shown.



CJ-13.99
Heart joint
.....6.00

CJ-33.99 Bow joint.....5.00



CJ-23.99
String joint
.....5.00

Bows

The finishing touch for your new bra - the classic bow that adorns ready-to-wear. That little bow will make people wonder if you *did* make that bra or not! Package of two.



- AB-1.10 White
- AB-1.20 Ivory
- AB-1.35 Apricot
- AB-1.40 Pink
- AB-1.42 Bright Pink
- AB-1.46 Wood rose/Mauve
- AB-1.47 Red
- AB-1.48 Claret /Burgundy
- AB-1.53 Lilac
- AB-1.60 Light Blue
- AB-1.67 Royal Blue
- AB-1.82 Beige/nude
- AB-1.98 Black1.00

Gifts for your Bosom Buddies

THE BRA BAG



End the frustration of crushed cups forever with the Bra Bag. This cleverly designed "bra" will protect up to 6 foam cup (t-shirt) type bras, no matter what happens to your suitcase! Two sizes available - regular (up to D cups) and buxom (D cups and larger). Our students have converted this bra bag to a handbag by inserting fabric V's to the sides. Makes a great gift!

- AJ-1.40 Pink with black polka dots
- AJ-1.63 Denim with Crystals
- AJ-1.73 Turquoise & Chocolate Dots
- AJ-1.86 Leopard
- AJ-1.98 Classic Black.....50.00
- AJ-5.40 Buxom size Pink with black polka dots
- AJ-5.73 Buxom size Turquoise & Chocolate Dots
- AJ-5.98 Buxom size Classic Black.....55.00



BRA-MAKERS PEWTER PIN

Is there a better way to show your bosom buddy that you care? This pewter corset pin is magnetic so no pins will ruin your clothes. Great gift for any bra-maker.

AP-4.94 Pewter Corset
.....10.00

NIPPLE COVERS



If you are embarrassed by nipples that protrude, but do not wish to wear a padded bra, these are for you! Nipple covers adhere to the skin with a mild gel adhesive, and they stay until you remove them easily. The gel reactivates each time you wash them with plain water. Boutiques charge \$20 per set!

AN-20.....12.00 pr

PUSH-UP GEL PADS

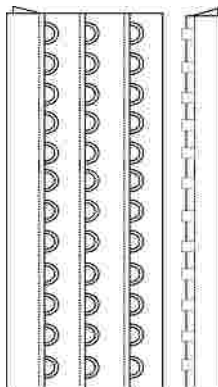
Want to be a cup size larger? Are you uneven from left to right? Our flesh-coloured gel push-up pads slide into the bra without adhesive, and can't be seen through clothing. Top quality gel material. Boutique price is \$30 pair - our price is half!

AG-30.....15.00 pr

Hooks and Eyes

HOOK AND EYE TAPE BY THE METRE

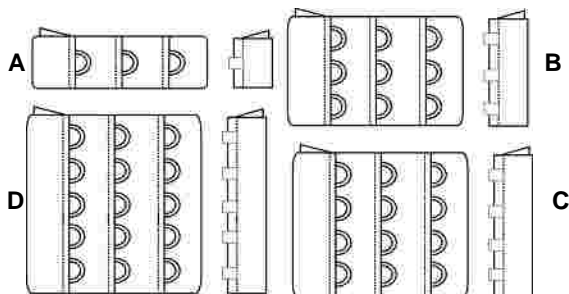
We carry industry quality nylon hook and eye closures with plush back for comfort and three columns of eyes for adjustability. Order by the hook or by the metre, there are hooks and eyes spaced every 3/4" and 53 hooks and eyes in one metre. The tape can be trimmed to fit and needs no finishing, but it can be zig-zagged along the cut edge to finish it off. Specify number of hooks (vertically) that you need. There are 12 shown at right.



- HE-7.10 White
- HE-7.98 Black
- HE-7.82 Beige
- HE-7.20 Ivory
- HE-7.30 Champagne..... 0.50 ea

PRE-CUT AND SEALED SETS

All the sealed sets have three columns of eyes for adjustability and are heat sealed along the top and bottom edges so they won't fray or look ragged with washing.



A. SEALED SETS (1 HIGH)

- HS-13.10 White
- HS-13.98 Black..... 1.00 ea

SEALED SETS (2 x 3) not shown

- HS-23.13 Dyeable white
- HS-23.10 White
- HS-23.98 Black
- HS-23.82 Nude
- HS-23.20 Ivory
- HS-23.15 Pearl (off-white)
- HS-23.40 Pink..... 1.00 ea

B. SEALED SETS (3 x 3)

- HS-33.13 Dyeable white
- HS-33.10 White
- HS-33.98 Black
- HS-33.82 Beige
- HS-33.20 Ivory 1.50 ea

C. SEALED SETS (4 x 3)

- HS-43.20 Ivory 2.00 ea

D. SEALED SETS (5 x 3)

- HS-53.20 Ivory 2.50 ea

Needles

SCHMETZ STRETCH NEEDLES

For perfect sewing on spandex blend fabrics, you need stretch needles, designed to prevent skipped stitches. 5 per pkg.

- NS-7511 Size 75/11
- NS-9014 Size 90/14..... 6.00

SCHMETZ BALLPOINT NEEDLES

Ballpoint needles are good for sewing on knits that do not contain spandex, such as cotton jerseys or Simplex. 5 per pkg.

- NB-1070 Size 70/10
- NB-1280 Size 80/12
- NB-1490 Size 90/14..... 3.50

SCHMETZ UNIVERSAL NEEDLES

All-purpose universal needles from Schmetz will sew a wide variety of woven fabrics. We love them for our corsets! 5 needles in the package.

- NU-7010 Size 70/10
- NU-8012 Size 80/12
- NU-9014 Size 90/14..... 3.50

Thread

THREAD



Wow! We found Guterman *industrial quality* thread perfect for bra-making because its fine size will allow the stitches to virtually disappear into the fabric. We've bought colours that match our products. Nude is an especially hard colour to find. Each cylinder holds **1000 meters** (almost 1100 yards) and can be used on either domestic or industrial machines. Quality is superior to the brand sold in fabric stores.

- TG-10.10 White
- TG-10.98 Black
- TG-10.20 Ivory
- TG-10.15 Off-white
- TG-10.82 Nude
- TG-10.40 Pink
- TG-10.57 Purple
- TG-10.23 Yellow
- TG-10.68 Navy Blue
- TG-10.69 Indigo
- TG-10.93 Grey
- TG-10.50 Black Cherry
- TG-10.64 Bluebird Blue
- TG-10.79 Forest green
- TG-10.71 Turquoise
- TG-10.26 Dijon Gold
- TG-10.47 Cool Red
- Each Cylinder 6.00

Tool Box Items

ELASTIC GUIDES



Stop using a safety pin to feed elastic into casings! These elastic guides will do the job quicker and easier. Set of 3 sizes will hold securely and feed almost any width of elastic or ribbon.
 NT-707 Elastic guides.....3.00

LOOP TURNER

It's almost indispensable for turning small tubes for spaghetti straps, tube straps or lace-up bras. The loop turner uses a hook and latch to catch and pull the fabric through to the other end.
 NT-212 Loop turner3.00

BIAS PRESS BARS

If you need to press inside a tube, you need a small press bar. This is a set of 5 such bars that are heat resistant, perfect for any type of tube or cylinder pressing.
 NT-510 Press Bars 10.00

NON-STICK FUSIBLE SHEET

When fusing Wonder Under, fusible interfacings, even the fusible padding for straps, protect your ironing surface. If any resin gets on the sheet, let it cool and rub it lightly to remove. Size 13 x 17
 NT-1317 Pressing Sheet 25.00

SEAM GAUGE

This gadget should be in every sewing box, but sometimes we can't remember where it is! You'll appreciate this small gauge when measuring strap and elastic widths, and determining if your hook and eye space is the correct width. Inches and mms.
 NT-615 Seam gauge3.00

FORK PINS

This product was designed for bra-makers, I just know it! No more pins sliding out of thin and silky fabrics. These unusually shaped pins hold the fabric in two places to keep the work from creeping.
 NT-240.....13.00



FLEXI-CURVE



Duplicating a curve is easy with a flexi-curve. The lead core is easy to shape over the cross cup, or around the crotch area. Then remove it carefully and trace the curve on paper. Conveniently marked in both inches and centimeters. 18" long
 NC-820 Flexi-curve..... 25.00

SEAM RIPPER



As so we sew - so shall we rip. Truer words never spoken! You need a sharp ripper to un-sew seams - it's inevitable. Clover makes the best rippers.
 NT-150 Seam Ripper..... 8.00

TAPERED AWL



Use for setting corset busks! A tapered shaft will push threads aside for the stud to fit through without cutting the fibres. The threads will close around the stud, ensuring a snug fit.
 NT-100 Tapered Awl 12.00

REALLY FINE & SHARP PINS

Silk pins from Clover are the best - no doubt about it. They are sharp pointed pins 1 1/2" long with glass heads so they can withstand the heat of an iron without melting.
 NT-500 Pins.....12.00



Markers

AIR ERASABLE PENS

Purple marker that will disappear with time, or by using water to dissolve it - with your choice of two tips. Great for marking temporary marks on fabric.
 NM-18.58 Fine line Purple marker
 NM-33.58 Regular line marker..... 5.00

FINE-LINE WATER ERASABLE PENS

Blue marker that readily erases from fabric with a damp cloth or sponge. Fine lines make the marks more accurate.
 NM-11.60 Fine Blue marker..... 3.00

MARKING PENS WITH ERASER (PINK)

My favourite colour in a great marker! The pink marking fluid is magically removed with the eraser in the pen's opposite end.
 NM-25.41 Pink marker/eraser..... 5.00

SLIM-LINE CHACO-LINER



Drawing around patterns and marking internal lines such as darts and placement points has never been so easy, or so accurate. The small roller in the tip of the Chaco-liner releases chalk in a very tiny, yet visible yellow line.
 NM-40.23 Yellow Chaco-liner 7.00

YELLOW WAXY CHALK MARKER

Sometimes you just need a wax marker. We have found one that is reliable and easy to use and see. We use them to mark around our hard copy patterns, then cut *inside* the chalk line with a rotary cutter for the most accurate pattern pieces.
 NM-47.23 Yellow chalk 2.00

The Cutting Edge

28 MM ROTARY CUTTER

Essential for cutting small pattern pieces with accuracy. The larger rotary cutters can't cut the curves as well as the small cutter can. Designed for use with single or two ply fabrics.

NR-28 28 mm cutter	28.00
NR-28-B Package of 10 blades	40.00

18 MM ROTARY CUTTER

The smallest rotary cutter available - this one is so small, you can cut notches with accuracy. Designed for single and two ply fabrics.

NR-18 18 mm cutter	15.00
NR-18-B Package of 2 blades.....	10.00

KAI 7250 SHEARS



Truly the best scissors and shears in the world. We bought these on the recommendation of our industrial sewing machine supplier - he said they cut like a knife through butter. Well, I haven't tried them in the kitchen - but they are the BEST scissors I've ever owned. Yes, I've owned all the major brands!

NK-7209 9" shears.....	80.00
NK-7210 10" shears.....	90.00

KAI 5135



Keep these 5 1/2" scissors by your sewing machine and they will do a fine job of cutting the excess bits of fabric and thread from your latest project.

NK-5135 Scissors	20.00
------------------------	-------

Swim & Bra Cups

Any garment that uses bra cups, such as t-shirt bras, swimwear, bridal gowns, strapless dresses or sun dresses, will benefit from using our foam cups. These cups are all finished with high quality polyester lining on both the interior and the exterior of the cup, so no additional lining is needed. We've selected medium density foam in two popular styles.

These cups are numbered by their sizes as follows:

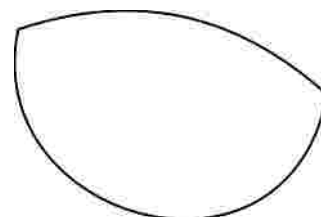
- #32 Usually fits 34A, 32B, 30C
- #34 Usually fits 36A, 34B, 32C
- #36 Usually fits 38A, 36B, 34C
- #38 Usually fits 40A, 38B, 36C, 34D
- #40 Usually fits 40B, 38C, 36D, 34E
- #42 Usually fits 42B, 40C, 38D and 36E
- #44 Usually fits 42C, 40D, 38E, 36F

BALCONETTE STYLE (use the Long wires)

- MB-32.12 Pearl #32
- MB-34.12 Pearl #34
- MB-36.12 Pearl #36
- MB-38.12 Pearl #38
- MB-40.12 Pearl #40

- MB-32.98 Black #32
- MB-34.98 Black #34
- MB-36.98 Black #36
- MB-38.98 Black #38
- MB-40.98 Black #40

- MB-32.82 Beige #32
- MB-34.82 Beige #34
- MB-36.82 Beige #36
- MB-38.82 Beige #38
- MB-40.82 Beige #40 8.00 pr

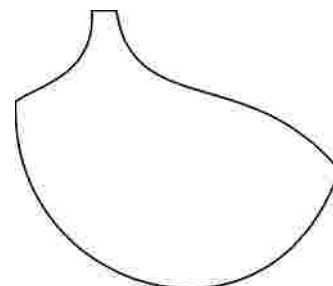


STRAP TAB STYLE (use the Long wires)

- MS-32.12 Pearl #32
- MS-34.12 Pearl #34
- MS-36.12 Pearl #36
- MS-38.12 Pearl #38
- MS-40.12 Pearl #40
- MS-42.12 Pearl #42
- MS-44.12 Pearl #44

- MS-32.98 Black #32
- MS-34.98 Black #34
- MS-36.98 Black #36
- MS-38.98 Black #38
- MS-40.98 Black #40
- MS-42.98 Black #42
- MS-44.98 Black #44

- MS-32.82 Beige #32
- MS-34.83 Beige #34
- MS-36.83 Beige #36
- MS-38.83 Beige #38
- MS-40.83 Beige #40
- MS-42.83 Beige #42
- MS-44.83 Beige #44..... 8.00 pr



Underwires

All our wires are custom made to our specifications and are made from quality metal with coated tips for protection. In the chart below, the cells on the left contain the band size, the cells across the top hold the cup size. The cell where the two intersect is your wire size. If you have a wire from an old bra that fits you well, you can check it for size against the wire chart on our website at www.bramakerssupply.com (under "Downloadable Wire Charts").

UNDERWIRE CHART

	A	B	C	D	E	F	G	H	I	J
32	30	32	34	36	38	40	42	44	46	48
34	32	34	36	38	40	42	44	46	48	50
36	34	36	38	40	42	44	46	48	50	52
38	36	38	40	42	44	46	48	50	52	54
40	38	40	42	44	46	48	50	52	54	56
42	40	42	44	46	48	50	52	54	56	58
44	42	44	46	48	50	52	54	56	58	60
46	44	46	48	50	52	54	56	58	60	60
48	46	48	50	52	54	56	58	60	60	60

SHORT DEMI WIRES

These wires are cut and tipped to the ideal arm length for demi-cup bras. They have the same diameter as any other wire of the same size, but the centre front tip is lower for more cleavage.

- WS-30 Fits 34AA, 32A, 30B
- WS-32 Fits 36AA, 34A, 32B, 30C
- WS-34 Fits 36A, 34B, 32C, 30D
- WS-36 Fits 38A, 36B, 34C, 32D, 30E
- WS-38 Fits 40A, 38B, 36C, 34D, 32E
- WS-40 Fits 40B, 38C, 36D, 34E, 32F
- WS-42 Fits 42B, 40C, 38D, 36E, 34F
- WS-44 Fits 42C, 40D, 38E, 36F
- WS-46 Fits 44C, 42D, 40E.....2.00 pr

REGULAR LENGTH METAL WIRES

These wires are best suited to bras with slightly lowered centre fronts or ones where a long wire is "slightly" too long for the casing. The front arms are shorter by 10 mm (3/8") than our long wires. See the comparison chart at right.

- WR-30 Fits 34AA, 32A, 30B
- WR-32 Fits 36AA, 34A, 32B, 30C
- WR-34 Fits 36A, 34B, 32C, 30D
- WR-36 Fits 38A, 36B, 34C, 32D, 30E
- WR-38 Fits 40A, 38B, 36C, 34D, 32E
- WR-40 Fits 40B, 38C, 36D, 34E, 32F
- WR-42 Fits 42B, 40C, 38D, 36E, 34F
- WR-44 Fits 44B, 42C, 40D, 38E, 36F, 34G
- WR-46 Fits 46B, 44C, 42D, 40E, 38F, 36G, 34H
- WR-48 Fits 48B, 46C, 44D, 42E, 40F, 38G, 36H
- WR-50 Fits 50B, 48C, 46D, 44E, 42F, 40G, 38H
- WR-52 Fits 52B, 50C, 48D, 46E, 44F, 42G, 40H
- WR-54 Fits 52C, 50D, 48E, 46F, 44G, 42H
- WR-56 Fits 52D, 50E, 48F, 46G, 44H.....2.00 pr

CUT TO FIT PLASTIC UNDERWIRES

Great for those with metal sensitivities. These are symmetrical and can be cut to any length easily.

- WP-32 Fits 36AA, 34A, 32B, 30C
- WP-34 Fits 36A, 34B, 32C, 30D
- WP-36 Fits 38A, 36B, 34C, 32D
- WP-38 Fits 38B, 36C, 34D
- WP-40 Fits 40B, 38C, 36D
- WP-42 Fits 42B, 40C, 38D
- WP-44 Fits 44B, 42C, 40D.....2.00 pr

LONG METAL WIRES

If you are making the Classic Bra or Beverly's class pattern, these wires will be the ones you need.

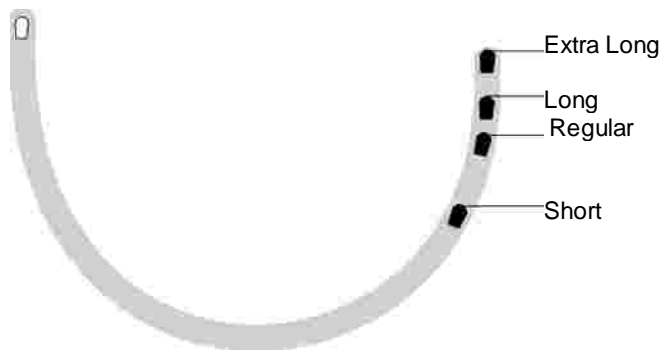
- WL-30 Fits 34AA, 32A, 30B
- WL-32 Fits 36AA, 34A, 32B, 30C
- WL-34 Fits 36A, 34B, 32C, 30D
- WL-36 Fits 38A, 36B, 34C, 32D, 30E
- WL-38 Fits 38C, 34D, 32E
- WL-40 Fits 38C, 36D, 34E, 32F
- WL-42 Fits 40C, 38D, 36E, 34F
- WL-44 Fits 42C, 40D, 38E, 36F, 34G
- WL-46 Fits 46B, 44C, 42D, 40E, 38F, 36G, 34H
- WL-48 Fits 48B, 46C, 44D, 42E, 40F, 38G, 36H
- WL-50 Fits 50B, 48C, 46D, 44E, 42F, 40G, 38H
- WL-52 Fits 52B, 50C, 48D, 46E, 44F, 42G, 40H
- WL-54 Fits 52C, 50D, 48E, 46F, 44G, 42H
- WL-56 Fits 52D, 50E, 48F, 46G, 44H
- WL-58 Fits 54D, 52E, 50F, 48G, 46H
- WL-60 Fits 56D, 54E, 52F, 50G, 48H.....2.00 pr

EXTRA LONG METAL WIRES

These wires are 5/8" to 1" longer in the front only than the long wires. Use these when you need more front height.

- WX-34 Fits 36A, 34B, 32C, 30D
- WX-36 Fits 38A, 36B, 34C, 32D, 30E
- WX-38 Fits 40A, 38B, 36C, 34D, 32E
- WX-40 Fits 40B, 38C, 36D, 34E, 32F
- WX-42 Fits 42B, 40C, 38D, 36E, 34F
- WX-44 Fits 44B, 42C, 40D, 38E, 36F, 34G
- WX-46 Fits 46B, 44C, 42D, 40E, 38F, 36G, 34H
- WX-48 Fits 48B, 46C, 44D, 42E, 40F, 38G, 36H
- WX-50 Fits 50B, 48C, 46D, 44E, 42F, 40G, 38H
- WX-52 Fits 52B, 50C, 48D, 46E, 44F, 42G, 40H
- WX-54 Fits 52C, 50D, 48E, 46F, 44G, 42H
- WX-56 Fits 54C, 52D, 50E, 48F, 46G, 44H
- WX-58 Fits 56C, 54D, 52E, 50F, 48G, 46H
- WX-60 Fits 56D, 54E, 52F, 50G, 48H.....2.00 pr

COMPARISON OF WIRE LENGTHS AT THE FRONT



Wire Casings

11 mm PLUSH WIRE CHANNELLING



This channel is our preferred channelling - it is thick and soft and dyes like a dream come true - we love it! Easy to apply; the marker line of the channelling gets stitched to the seamline of the cup with a straight stitch. Sewing with the channel taut will help it roll better to the inside of the bra. Woven to be slightly stretchy so it curves easily.

UP-2.10 White
 UP-2.98 Black
 UP-2.82 Light Beige
 UP-2.20 Ivory
 UP-2.40 Pink
 UP-2.35 Apricot
 UP-2.87 Espresso
 UP-2.15 Pearl (cream).....2.00 m

10 mm PRE-CURVED UNDERWIRE CASING



For those who prefer a less textured wire casing, this one is very densely woven. It's so firm, it actually is "pre-curved" to a semi-circular shape. To apply to a partial band bra, sew it so the curve of the casing turns to the outside of the bra. That way, when it is turned to the inside and topstitched, the curve will be laying in the correct direction.

UC-1.15 Off-white
 UC-1.81 Beige.....2.00 m

10 mm TEXTURED CASING



This channelling is nice to feel and easy to work with, being made with a cover of bias-cut brushed nylon tricot with an interior filler. It dyes easily, too

UT-3.30 Champagne.....2.00 m

8 mm SMOOTH WIRE CASING



Just what you need when you need a narrow channelling - perhaps for smaller bras or for a more delicate look. It's just 8 mm wide (5/16") but has all the protection against poke-through as its big sisters above. Great for small sizes.

UN-4.10 White
 UN-4.98 Black.....2.00 m

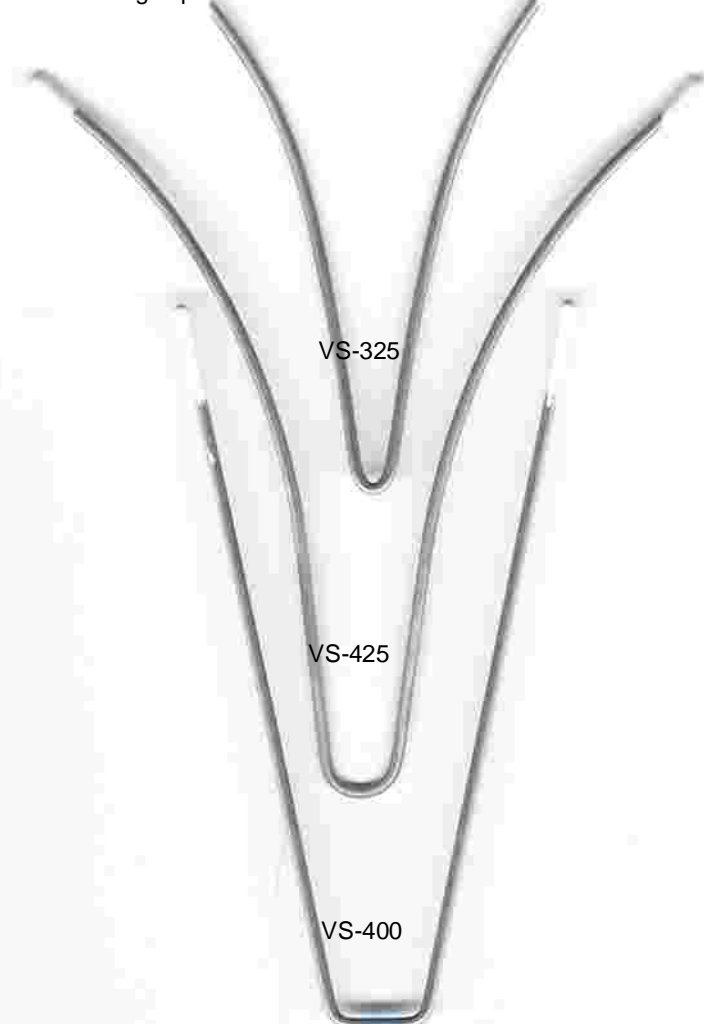
Separators

V-SEPARATORS

Use these solid metal wires in deep plunge necklines of bras, costumes or dancewear. They can be used in combination with underwires or boning, inserted into a continuous channel or into a casing made from the fabric itself. Actual size shown.

VS-325 is 2.25" (60 mm) wide and 3.25" (78 mm) long
 VS-425 is 3.75" (97 mm) wide and 4.25" (110 mm) long
 VS-400 is 2.25" (60 mm) wide and 4.25" (110 mm) long

VS-325 Short V-wire.....4.00
 VS-425 Long V-wire.....4.00
 VS-400 Long Square V-wire.....4.00



CRYSTAL SEPARATOR

Picture this lovely separator connecting the two cups of your new bikini, or on the hip area of your new string bottoms. Twelve small crystals add a bit of "bling" and the white metal finish will complement any fabric choice.

VJ-48.99 Separator.....5.00

Boning - Plastic or Metal

SPIRAL BONING

Spiral bones, made of coiled wire (looks like a tiny flattened Slinky toy!) offer flexibility in every direction, yet they still support where needed, along the seams and vertically under the cups in a seamless garment, corset, bustier or bodice. To use, simply cut the length required with wire cutters (c'mon - they're in your garage!) and cap the ends with metal tips using pliers. Sold in cut lengths of one metre



BS-100 Spiral boning.....4.00 m
BS-12 Tips (12 per pkg)5.00

STEEL BONES

1/4" wide white steel bones that offer the ultimate support in corsets, long line bras and any garment where a bra foundation is used as the interior support. The tips have been rounded and coated for longer life and better comfort. They can be cut and filed if you need shorter lengths. Sold by the pair.



BM-07 7" length
BM-08 8" length
BM-09 9" length
BM-10 10" length
BM-11 11" length
BM-12 12" length.....2.00 pr

PRE-CUT SHORT PLASTIC BONES

These top quality pre-cut bones are perfect for boning the front and sides of bras or other garments that need an extra bit of support. Rounded tips are comfortable to wear. Sold in pkgs of 10.



BP-095 (9.5 cm or 3-3/4")
BP-100 (10 cm or 4")
BP-105 (10.5 cm or 4-1/8")
BP-110 (11 cm or 4 3/8")
BP-115 (11.5 cm or 4-1/2") Packs of 10.....2.00

RIGILENE SEW-IN BONING

If you need boning you can sew through, Rigilene is the brand you are looking for. You can sew it on the front seam of a princess style strapless dress, or in the lower cup of bras for extra support. You can cut it easily with scissors, and finish the ends with heat from a match or lighter. This melts the rigid interior strands and keeps them from poking out.

BR-6.10 White 1/4"
BR-6.98 Black 1/4"
BR-12.10 White 1/2"
BR-12.98 -Black 1/2"4.00 m

PLASTIC BONING WITH COTTON CASING

If you prefer not to use channelling with the boning, a less expensive option is to purchase our covered boning. You won't be disappointed - our cover is made from 100% sturdy cotton, which will contour nicely but is still dyeable. The boning is 1/4" plastic same as above. It takes about 11 metres to do a corset. Retail 3.00

BC-8.10 White
BC-8.98 Black.....3.00 m

PLASTIC BONING WITHOUT CASING

1/4" good quality plastic boning perfect for corsets, bridal gowns and other boned garments. This particular boning fits inside our channelling too, which makes a nice firm casing for the boning. It takes approx. 11 metres to make a corset.

BP-01..... 2.00 m

Busks & Corset Essentials



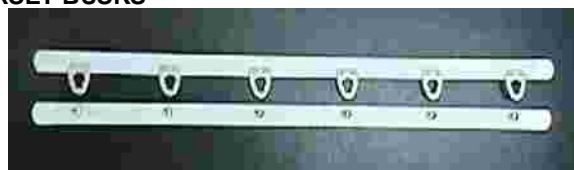
FREEDOM CORSET

This well-fitting corset is so-named because of the amount of design freedom you have when constructing it. Not only can you use a traditional busk (giant loops and studs) for the front closing, but you could use a separating zipper (think crystal!) or no opening at all. The lace-up back can use pre-made grommet tape (sold on page 23) or you can set your own. Corsets are fun but surprisingly comfortable

and yet so practical, especially under a strapless gown. You'll find infinite design opportunities with this one pattern. Bust sizes 28-50 included in one envelope.

P-1407 Freedom Corset.....20.00

CORSET BUSKS



You can't possibly make a proper corset without a busk for the front - this steel stud and loop system allows milady to dress herself without the aid of a servant. Busks also keep the corset close to the chest wall so one's dance partner can't gaze into one's cleavage! 12" steel busks with silver or gold studs.

BB-12
BB-11.8.....25.00

GROMMET TAPE

Any garment that you wish to lace up can be finished in minutes with our grommet tape, saving hours of grommet application. Simply spread the folded edge and sew to the centre back or front raw edges (both sides). You can then sew a channel for optional boning (as shown at right) to keep the area from twisting. 100% nylon, for optimum dyeability and smart looks.



BG-2.10 White
BG-2.98 Black..... 15.00 m

LACING CORD

Lace up the back of your new corset with braided cord, it is both strong but small in diameter, so it will fit through the grommet eyes easily and lace up snugly without loosening off. Five metres will lace the average corset.

BL-5.10 White
BL-5.98 Black1.50 m



Last Chance items

Here's your chance to buy these former favourites at great savings. All items subject to availability. When they are gone - they are gone forever.

EXCITING PRINTS & TEXTURES

Add these for fun and colour in your wardrobe! In fact, these are so pretty, they can be worn as a bustier or summer top. Try one of these exiting fabrics today! You may wish to use these with another fabric for heavier cups. 60" wide nylon spandex.

F-91.65 Blue/green/rose All-over Floral

F-91.64 Blue/Rose posie bouquet print

Originally 24.00 m.....NOW 12.00 m



CRYSTAL BUCKLE

Wide buckles are the latest fashion trend, and we have a 3" high crystal buckle. Why not get these buckles while they last and make your own outfits sparkle?

You can easily make a belt by looping a tube of fabric around the center bar and stitching it down. The other (finished) end of the tube will go around your body and through the buckle, just like a slider and ring!

CJ-87.99.....3.00

DETACHABLE BRA STRAPS

These fun detachable bra straps are a good way for young and young-at-heart to add fashion's flair to an otherwise plain bra. They are perfect for wearing under those popular tops with spaghetti straps as well as sleeveless tanks. It's not a problem anymore to have the straps showing! All are 10 mm (3/8" wide) unless otherwise noted and are stronger than you would think. All straps sold in pairs ready to wear. Designs can be seen on the website at www.bramakerssupply.com

SD-10.00 Clear 10 mm (3/8")

SD-10.05 Clear Frosted 10 mm (3/8")

SD-13.00 Clear 13 mm (1/2")

SD-13.05 Clear Frosted 13 mm (1/2")

SD-15.00 Clear 15 mm (5/8")

SD-15.05 Clear Frosted 15 mm (5/8")

SD-19.00 Clear 19 mm (3/4")

SD-19.05 Clear Frosted 19 mm (3/4")

SD-12.23 Yellow Clear 13 mm (1/2")

SD-12.47 Red Clear 13 mm (1/2")

SD-12.65 Blue Clear 13 mm (1/2")

SD-12.77 Lime Green Clear 1/2"

SD-12.40 Pink Clear 13 mm (1/2")

SD-12.53 Lilac Clear 13 mm (1/2")



SD-31 My Baby Angel printed on clear 13 mm (1/2")

SD-32 Rosy Red Hearts printed on clear 10 mm (3/8")

SD-33 Strawberries Red/green printed on clear 10 mm (3/8")
10 or moreNOW 1.00 pr

SD-34 Blue Rhinestones on clear
SD-35 Red Rhinestones on clear

SD-36 Teal Glitter
SD-37 Blue Glitter
SD-38 Green Glitter
SD-39 Fuchsia Glitter.....3.00 pr
10 or moreNOW 1.50 pr

SD-40 Hologram Stars (in Clear Gel Strap).....4.00 pr
10 or more.....NOW 2.00 pr

SD-47 My naughty Angel black printed on clear

SD-48 Princess turq/gold printed on clear.....2.00 pr

How to Order

Prepare your order. You may print or photocopy the order sheet on our website, or use plain paper. Please list the description of goods including colour and size, product codes (if any) as well as the price.

Add the shipping from the info below and any applicable taxes (Canadians only). If you have an Ontario resale tax number, you MUST let us know; otherwise we have to charge you sales tax on your order. American and foreign orders do not add any taxes (Lucky people!) just the shipping rates.

You can order by mail, phone, fax, email or on-line. All orders are sent as quickly as possible, usually within 24 hours.

PHONE: 905-538-1396

FAX: 905-538-1397

EMAIL: orders@bramakers.com

ONLINE: www.bramakerssupply.com

We have an online shopping cart on our website, and we encourage you to use it. We add new products as soon as they are available. Register with your email address, then log-on and order whenever you want, day or night!

Payment Options

VISA - MASTERCARD - AMERICAN EXPRESS

You can order over the phone or online using your credit card. We can keep your number on file for future orders if you wish. Our site is secured once you get to the payment page, and secured by two separate systems. We are committed to keeping your information safe.

PAYPAL

The easiest way ever to send money! Paypal is a service that is both reliable and secure. It instantly transfers money from your bank account or credit card to the merchant once you set up your account. The merchant never knows your credit information and there is always a record of your payments.

MONEY ORDER

Yes, you can send us a money order, certified cheque or bank draft for your purchases. Please make the money order etc out to Bra-makers Supply in Canadian dollars if you can. We will accept USD but we will have to convert it at our bank.

CHEQUE

We will happily accept a cheque for the goods you order however we cannot ship the merchandise until the cheque clears the bank. In the case of US cheques, this can take up to 40 days. You are better off using Paypal or a credit card.

CASH

We do accept cash payments only if you visit our shop in Hamilton. Please, please do not send cash in the mail.

Volume Discounts

We offer some of our products at discounted prices if you purchase the minimum quantities required. Each product is shown with the single unit price, and a lower price for volume purchases. If you operate a business and you need wholesale rates for re-sale, please contact our office and we will email the wholesale catalogue to you.

Shipping

If you order through our online shopping cart, the cart will automatically calculate the shipping based on the physical dimensions of the items as well as their combined weight. That formula is then adjusted for your resident address.

ORDERS WITHIN CANADA

Small flat, lightweight items under \$10..... Add 3.00
 Orders less than \$ 25..... Add 6.00
 Orders between \$26 and \$100..... Add 10.00
 Orders between \$101 and \$200..... Add 15.00

ORDERS GOING TO THE USA

For orders to the United States, **deliveries will take longer** because the parcel must go through customs. Charges vary according to weight and location, but are usually as stated below. We will call you with any unexpected shipping changes.

Small flat, lightweight items under \$10..... Add 4.00
 Orders less than \$ 25..... Add \$ 6.50
 Orders between \$26 and \$100..... Add \$15.00
 Orders between \$101 and \$200..... Add \$20.00

INTERNATIONAL ORDERS

International orders will be sent by Canada Post to your country and passed for delivery to your own postal system. Mail to overseas addresses can sometimes take up to 2 months. **Please be patient.** Be sure to include your phone number and/or email address in case we need to call you. Charges will be assessed by weight and location. All orders need to be on a Visa or MasterCard *with a signature on the order form*, or through PayPal online. These charges are typical of surface mail. Air Mail costs about double of these rates. If you order on-line, shipping rates are calculated automatically based on weight and will likely be less than posted here.

Orders less than \$ 25..... Add \$12.00
 Orders between \$26 and \$100..... Add \$20.00
 Orders between \$101 and \$200..... Add \$30.00

Please note: Once the packages leave our shop, we have no more control over its delivery. We can trace a package that you believe has gone missing, but only after 45 days (Canada) 60 days (for the USA) and 72 days (International orders).

Return Policy

We are proud to say we have purchased the finest bra-making supplies available for your sewing pleasure. If you should receive goods that are defective in any way, please let us know so we can correct the problem. We will replace the items, or refund your money once the goods have been returned to us. We regret that there are no returns on cut goods, patterns, or goods in un-saleable condition.

Special Orders

We have a great selection of industry products available for wholesale ordering that we don't show in the catalogue. We would be happy to order these items for you as long as you take the minimum quantity necessary. Please contact our office for more information.

